

**Republic of Iraq
Ministry of Planning
Central Statistical Organization
Directorate of Industrial Statistics**

**Industrial Statistics
Results for Industrial
Large Establishments
(Accumulative)**

2015

Oct -2015

| Contents | Page |
|-------------------------------------------------------------------------------------------------------------------------|---------------|
| Introduction | 1 |
| Objective | 1 |
| Methodology | 2 |
| Concepts and terminology | 2 |
| Coverage | 3 |
| Data collection | 3 |
| Key indicators | 4 |
| Tables | |
| Table (1) Summary of industrial establishments statistics for in-service industrial establishments for (2011-2015) | 5 |
| Table (2) Key indicators for industrial large in-service establishments for (2011-2015) | 7 |
| Table (3) Summary of industrial large in-service establishments statistics by sector for 2015 | 10 |
| Table (4) Number of industrial large establishments, employees, wages and benefits by section and sector for 2015 | 11 |
| Table (5) Number of industrial large establishments , employees' wages and benefits by section and sector for 2015 | 16-12 |
| Table (6) Number of industrial large establishments, employees, wages and benefits by manufacture for 2015 | 26 -17 |
| Table (7) Value of sales and production by section and sector for 2015 | 27 |
| Table (8) Value of sales and production by division and sector for 2015 | 31-28 |
| Table (9) Value of sales and production by activity and sector for 2015 | 39 -32 |
| Table (10) Value of commodity and service production supplies by section and sector for 2015 | 40 |
| Table (11) Value of commodity and service production supplies by division and sector for 2015 | 45 -41 |
| Table (12) Value of commodity and service production supplies by manufacture and sector for 2015 | 56-46 |
| Table (13) Number of slaughterhouses, employees and wages by governorate for 2015 | 57 |
| Table (14) Type of revenues and amounts of contract and value and amount of electricity by governorate for 2015 | 58 |
| Table (15) Number of slaughtered animals in slaughterhouses and quantity of meat produced by governorate for 2015 | 59 |
| Figures | |
| Figure (1) Number of industrial large in-service establishments for (2011-2015) | 5 |
| Figure (2) Total production and supplies value for industrial large in-service establishments for (2011-2015) | 6 |
| Figure (3) Wages and benefits value for industrial large in-service establishments for (2011-2015) | 6 |
| Figure (4) Employees' productivity from production value for industrial large in-service establishments for (2011-2015) | 7 |
| Figure (5) Employees' productivity from value added for industrial large in-service establishments for (2011-2015) | 8 |
| Figure (6) Dinar productivity from wage for industrial large in-service establishments for (2011-2015) | 8 |
| Figure (7) Annual average per employee in industrial large in-service establishments for (2011-2015) | 9 |
| Figure (8) Manufacture rate (%) for industrial large in-service establishments for (2011-2015) | 9 |
| Figure (9) Number of industrial large in-service establishments for (2011-2015) | 10 |

Industrial Large Establishments Statistics for 2015

Introduction

Industry sector is considered to be one of the main economic sectors in many countries and plays an important role in the economic development and developing other economic sectors and labor force thus, contributing to gross domestic production. Given this importance and in light of efforts made by CSO and KRSO to provide annual and accurate statistical data it becomes very important to develop and raise its contribution to the GDP through the analytical studies of the statistical data for number of economic variables such as production, value added , labor force, wages, fixed capital formation...., etc.

Directorate of Industrial Statistics in cooperation with KRSO conducted a comprehensive annual survey on establishments and produce reports include key indicators on extraction industries (except oil) and manufacturing by sector: public, mixed, cooperative and private, many attempts since 50ths of the last century have been made to differentiate between handicrafts, domestic industries, (small, medium and large) industries based on two criteria: labor force and capital formation (machinery) where large industries was characterized by employing 30 employees or more. Due to the inflation, criterion of capital value was excluded to focus on labor force criterion when differentiate between large, medium and small establishments.

Objective

Providing indicators and detailed data on industrial activity based on UN recommendations in the field of industrial statistics that meet the needs of users and decision makers.

Industrial Large Establishments Statistics for 2015

Methodology

Analytical functions

Employee's productivity from production = Production value/number of employees

Value added = Revenues – supplies

Employee's productivity from value added = Value added –number of employees

Dinar productivity from wages = Production value / wages

Average employee share of supplies = Supplies value / No. of employees

Average annual wage per employee = Wages / No. employees

Rate of manufacturing % = (supplies value / production value) 100

Rate of change = (value of current year/value of previous year) -100-1

Concepts and Terminology

- Rate of manufacturing: Percentage of total supplies value to total production value.
- Supplies: Total crude (raw material) value) + total packing & packaging value+ total other commodity supplies + service supplies.
- Inputs: Total crudes value (raw material) + total packing & packaging value only in production currency.
- Outputs: Total value of completed production + incomplete production value + revenue of employing others.

Coverage

The report included all the establishments whose key activities are mining and quarrying, manufacturing as well as slaughterhouses of general municipalities directorates. Data collection for 2015 were collected based on the comprehensive frame of 2009 listing and numbering and after being prepared and updated by the Directorate of Industrial Statistics in cooperation with statistics directorates Baghdad and governorates. (ISIC3) has been adopted, (600) industrial large in-service establishments have been covered excluding that of (Ninevah, Anbar and Salah Al-Deen) due to their unstable situations as well as Kurdistan Region.

Data Collection

Large Industrial establishments survey is one of the periodical surveys whose implementation plan is a methodological one where industrial in-service establishments are comprehensively covered, the frame is annually updated and the cadre is provided with questionnaires to be filled by interviews.

After auditing, the questionnaires are sent to be audited and coded in the Directorate of Industrial Statistics based on the adopted coding and validation rules, computerized and audited in IT Directorate and finally produce output tables to prepare the report.

Industrial Large Establishments Statistics for 2015

Key Indicators

1. Number of in-service establishments
Declined to (600) at 2.6% in 2015 compared to 2014 where amounted (616) establishments. Out of service establishments amounted (326) at (35.2%) of total establishments distributed on governmental sector (8), public (44), mixed (7) and private (267).
2. Number of employees
Declined to (129024) at (4.3%) in 2015 compared to 2014 where amounted (134818) employees.
3. Wage and benefits value
Declined to (1447) billion ID at (8.1%) in 2015 compared to 2014 (1574) billion ID.
4. Industrial production value
Increased to (5469) billion ID at (28.1%) in 2015 compared to 2014 (4271) billion ID due to the high supplies value.
5. Supplies value
Increased from (2292) billion ID in 2014 to (3042) billion ID in 2015 at (32.7%).
6. Sales value
Increased from (3920) billion ID in 2014 at (33.5%) to (5232) billion ID in 2015.
7. Value added
Increased to (2427) at (22.6%) in 2015 compared to 2014 where amounted (1979).

Industrial Large Establishments Statistics for 2015

Table (1) Summary of industrial establishments statistics for in-service industrial establishments for (2011-2015)

| Year Indicator | 2011 | 2012 | 2013 | * 2014 | * 2015 | Change rate for 2015 2014 |
|----------------------------------------|---------|---------|---------|-----------|-----------|------------------------------------|
| Number of establishments | 546 | 657 | 657 | 616 | 600 | -2.6 |
| Number of employees | 185913 | 201254 | 175922 | 134818 | 129024 | -4.3 |
| Wages and benefits (million ID) | 1811616 | 2113674 | 2095103 | 1574060 | 1446676 | -8.1 |
| Production value (million ID) | 4277273 | 5164904 | 5573975 | 4270719 | 5468906 | 28.1 |
| Production supplies value (million ID) | 1800563 | 2568893 | 2879510 | 2292285 | 3042080 | 32.7 |
| Sales value (million ID) | 3613076 | 4675990 | 5100028 | 3919671 | 5232510 | 33.5 |
| Value added (million ID) | 2476710 | 2596011 | 2694285 | 1978966 | 2426825 | 22.6 |

* Excluding (Ninevah, Anbar, Salah Al-Deen)

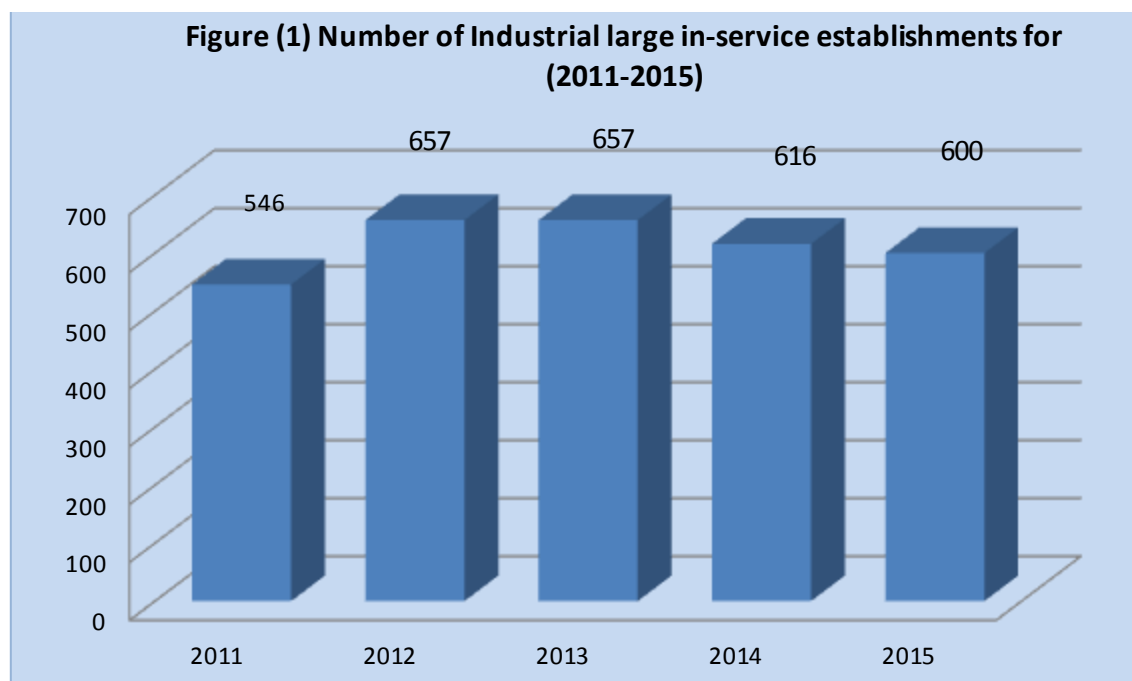


Figure (2) Total production and supplies value for industrial large in-service establishments for (2011-2015)

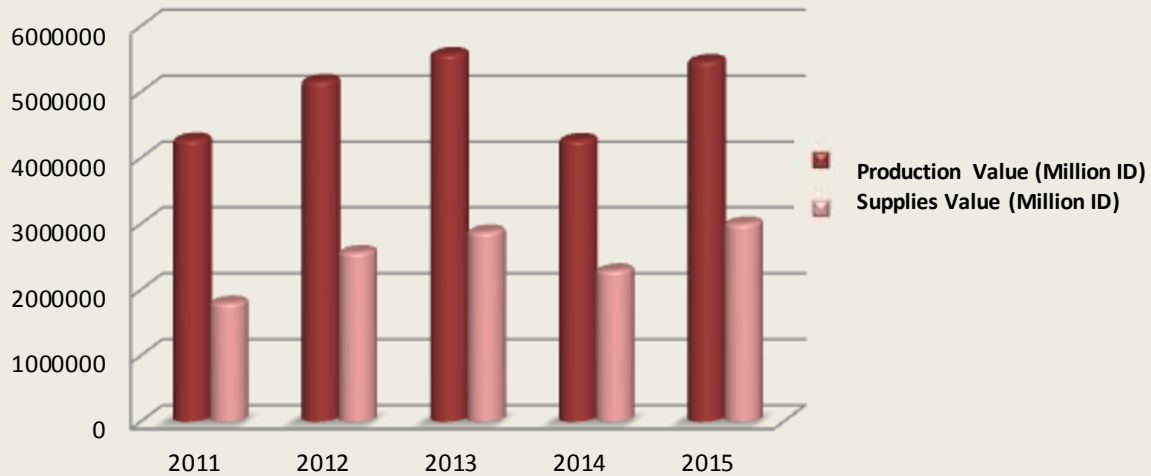


Figure (3) Wages and benefits value for industrial large in-service establishments for (2011-2015) (million ID)



Industrial Large Establishments Statistics for 2015

Table (2) Key indicators for industrial large in-service establishments for (2011-2015)

| Indicator | 2011 | 2012 | 2013 | 2014 | 2015 | Change rate for 2014 2015 |
|-------------------------------------------------|--------|-------|---------|---------|---------|---------------------------|
| Employee's productivity from production (000ID) | 23006 | 25663 | 31683 | 31677.7 | 42386.7 | 33.8 |
| Employee's productivity from value added | 13322 | 12899 | 15315.2 | 14678.8 | 18809 | 28.1 |
| Dinar productivity from wages | 2.4 | 2.44 | 2.7 | 2.7 | 3.8 | 40.7 |
| Average annual wage per employee (000ID) | 9744.4 | 10502 | 11909.3 | 11706.4 | 11238.6 | -4.0 |
| Manufacture rate % | 42.1 | 49.7 | 51.7 | 53.7 | 55.6 | 3.5 |

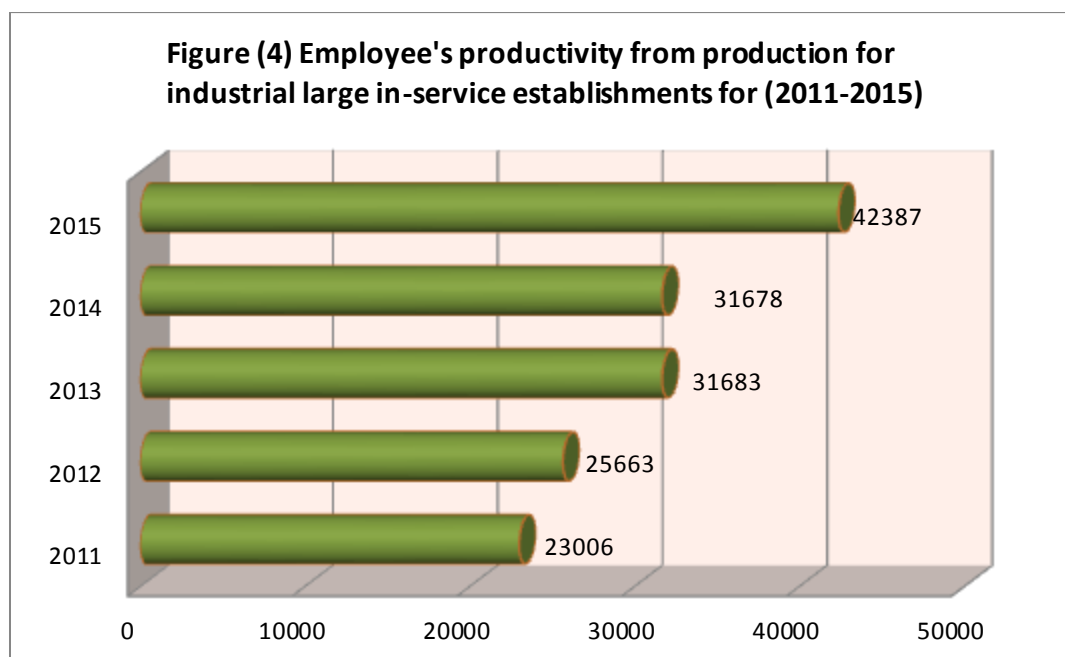


Figure (5) Employee's productivity from value added for industrial large in-service establishments for (2011-2015)

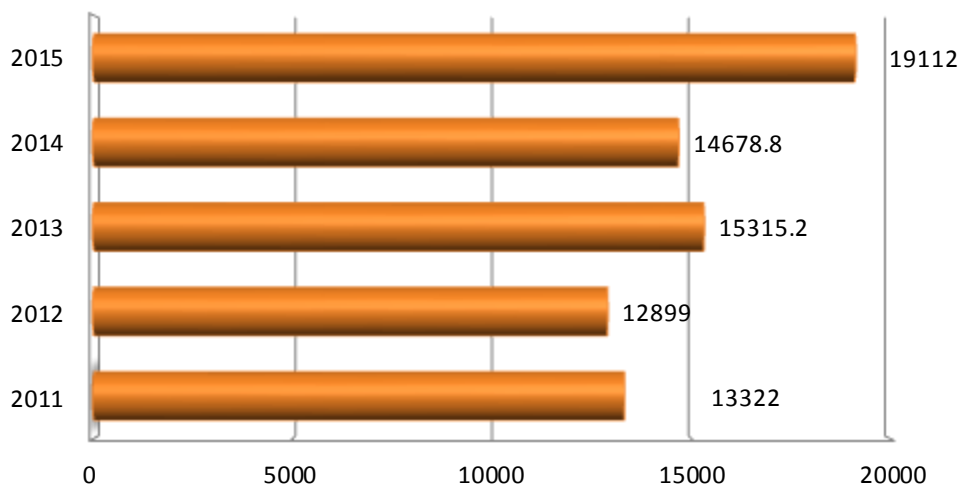
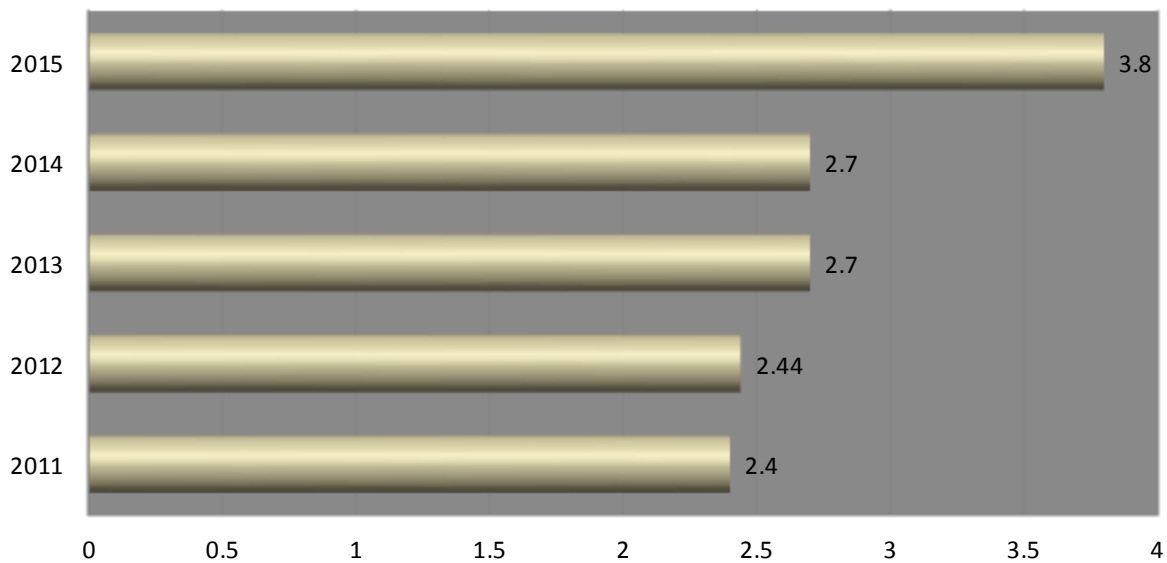
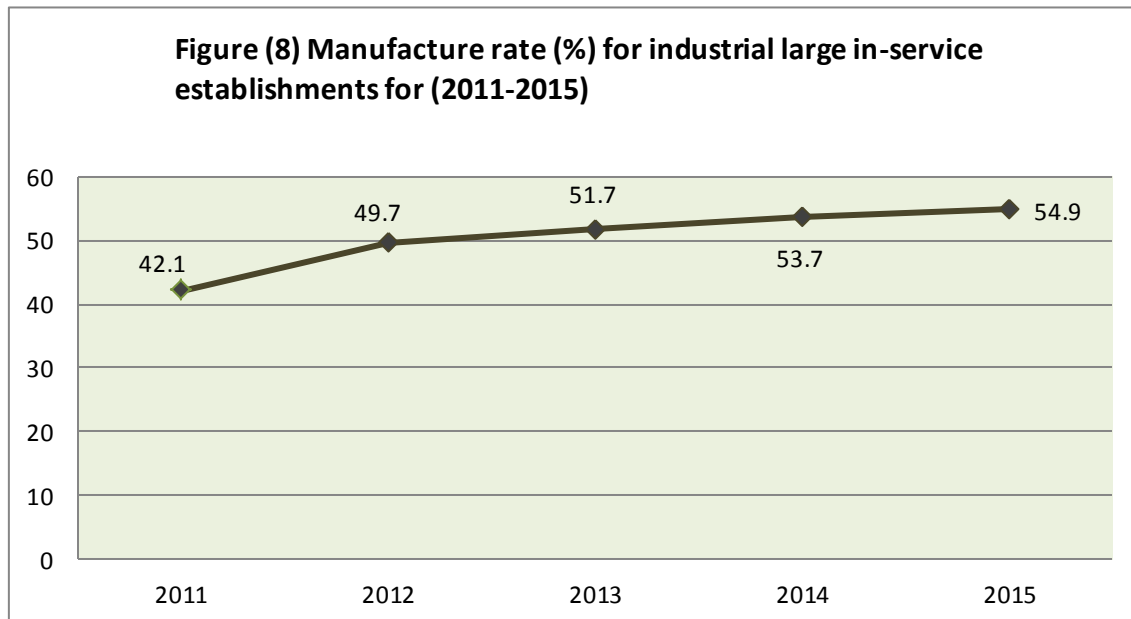
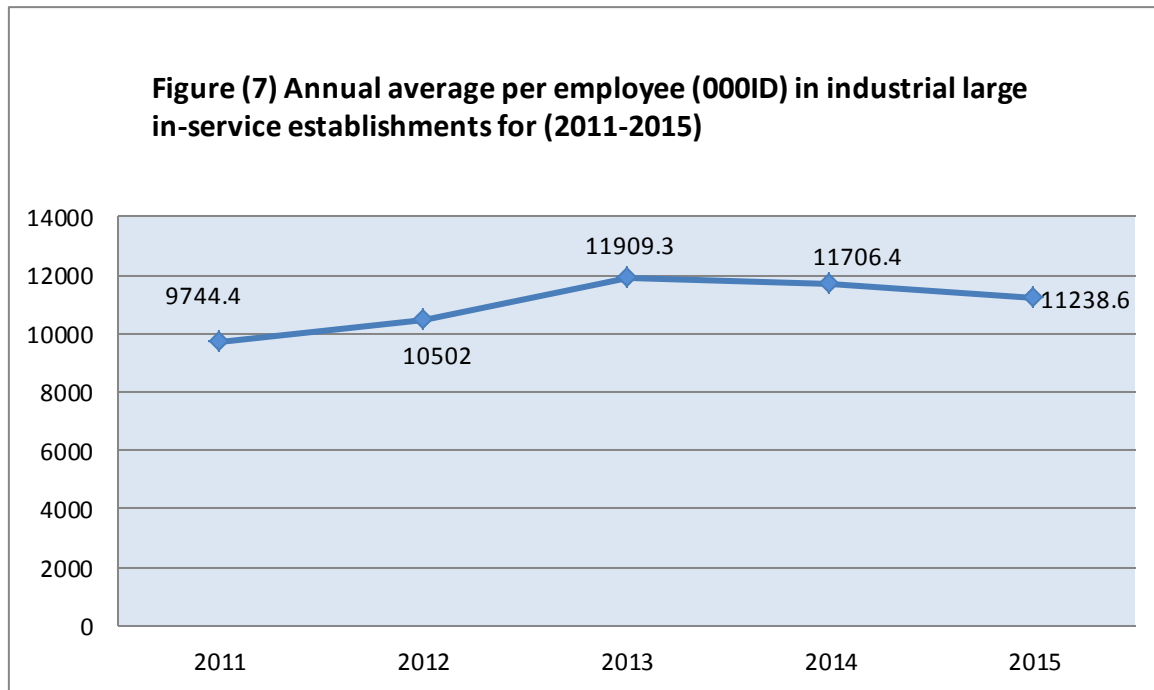


Figure (6) Dinar productivity from wages for industrial large establishments for (2011-2015)



Industrial Large Establishments Statistics for 2015

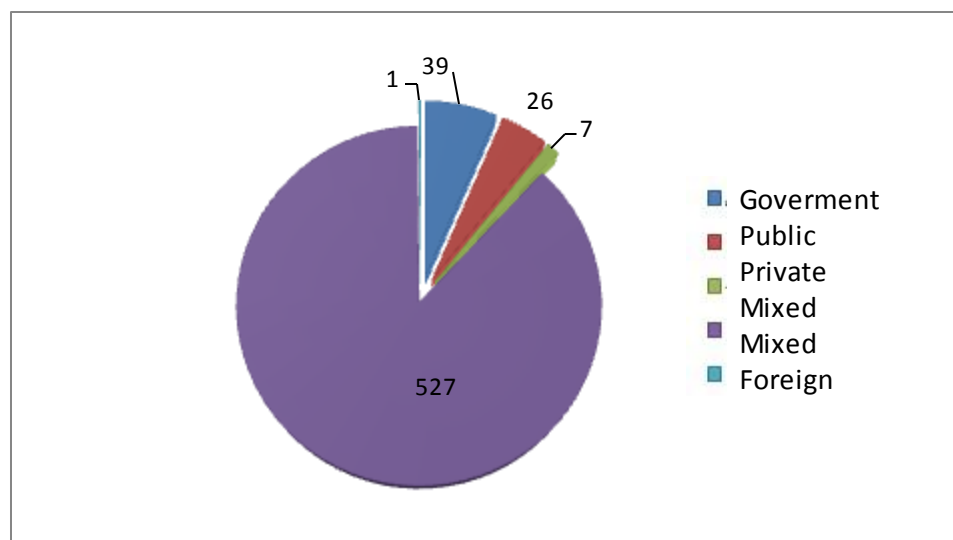


Industrial Large Establishments Statistics for 2015

Table (3) Summary of industrial large in-service establishments statistics by sector for 2015

| Sector Indieator | Govern mental | Public | Private | Mixed | Mixed foreign | Total |
|-----------------------------------------|------------------|--------|---------|--------|------------------|---------|
| Number of establishments | 39 | 26 | 527 | 7 | 1 | 600 |
| Number of employees | 75507 | 21543 | 28947 | 2627 | 400 | 129024 |
| Total wages and benefits(million ID) | 981637 | 245688 | 187460 | 28144 | 3745 | 1446674 |
| Industrial production value(million ID) | 3488069 | 254385 | 1506427 | 216551 | 3474 | 5468906 |
| Production supplies value(million ID) | 1699164 | 145341 | 1005711 | 188919 | 2945 | 3042080 |
| Sales value (million ID) | 3389367 | 252111 | 1371599 | 216063 | 3370 | 5232510 |

Figure (9) Number of industrial large in-service establishments by sector for 2015



Number of industrial large establishments, employees, wages and benefits by section and sector for 2015

Table (4)

| Section | Manufacture | Sector | No. of establishments | Average No. of employee | Wage and salary (000ID) | Benefits (000ID) | Wage, salary and benefits (000ID) | Unpaid employees * |
|---------|-----------------------------------|-----------------------|-----------------------|-------------------------|-------------------------|------------------|-----------------------------------|--------------------|
| B | Mining and quarrying | Public | 2 | 252 | 2141004 | 405469 | 2546473 | 0 |
| | | Total | 2 | 252 | 2141004 | 405469 | 2546473 | 0 |
| | Total mining and quarrying | | 2 | 252 | 2141004 | 405469 | 2546473 | 0 |
| C | Manufacturing | Governmental | 39 | 75507 | 901444452 | 80192606 | 981637058 | 0 |
| | | Public | 24 | 21291 | 230294269 | 12848453 | 243142722 | 0 |
| | | Private | 527 | 28647 | 174550431 | 12910021 | 187460452 | 300 |
| | | Mixed | 7 | 2627 | 24146906 | 3997113 | 28144019 | 0 |
| | | Mixed (Iraqi+foreign) | 1 | 400 | 3425699 | 319091 | 3744790 | 0 |
| | | Total | 598 | 128472 | 1333861757 | 110267284 | 1444129041 | 300 |
| | Total manufacturing | | 598 | 128472 | 1333861757 | 110267284 | 1444129041 | 300 |
| | Grand total | | 600 | 128724 | 1336002761 | 110672753 | 1446675514 | 300 |

* Unpaid employees

Number of industrial large establishments , employees wages and benefits by section and sector for 2015

Table (5) to be contiued

| Section | Manufacture | Sector | No. of establishments | Average no. of employee | Wage and (000ID)salary | (000ID)Benefits | ,Total wages salary and (000ID)benefits | Unpaid employees |
|----------------|------------------------------|---------------|------------------------------|--------------------------------|-------------------------------|------------------------|------------------------------------------------|-------------------------|
| B | Mining and quarrying | | | | | | | |
| 8 | Other mining and quarrying | | | | | | | |
| | | Public | 2 | 252 | 2141004 | 405469 | 2546473 | 0 |
| | | Total | 2 | 252 | 2141004 | 405469 | 2546473 | 0 |
| | Total | | 2 | 252 | 2141004 | 405469 | 2546473 | 0 |
| C | Manufacturing | | | | | | | |
| 10 | Manufacture of food products | | | | | | | |
| | | Governmental | 2 | 2892 | 30324634 | 2402928 | 32727562 | 0 |
| | | Public | 1 | 3770 | 24990770 | 1939673 | 26930443 | 0 |
| | | Private | 139 | 5518 | 30023248 | 2173364 | 32196612 | 68 |
| | | Mixed | 1 | 317 | 1392672 | 5685 | 1398357 | 0 |
| | | Total | 143 | 12497 | 86731324 | 6521650 | 93252974 | 68 |
| 11 | Manufacture of beverages | | | | | | | |
| | | Private | 18 | 2217 | 14635923 | 4525360 | 19161283 | 11 |
| | | Mixed | 1 | 1245 | 13795963 | 2518504 | 16314467 | 0 |
| | | Total | 19 | 3462 | 28431886 | 7043864 | 35475750 | 11 |

Number of industrial large establishments , employees wages and benefits by section and sector for 2015

Con. Table (5)

| Section | Manufacture | Sector | No. of establishments | Average no. of employee | Wage and (000ID)salary | (000ID)Benefits | ,Total wages salary and (000ID)benefits | Unpaid employees |
|----------------|----------------------------------------------------|---------------|------------------------------|--------------------------------|-------------------------------|------------------------|------------------------------------------------|-------------------------|
| 12 | Manufacture of tobacco products | Governmental | 1 | 1956 | 18721665 | 2002246 | 20723911 | 0 |
| | | Total | 1 | 1956 | 18721665 | 2002246 | 20723911 | 0 |
| 13 | Manufacture of textiles | Governmental | 5 | 13452 | 128395245 | 4709869 | 133105114 | 0 |
| | | Total | 5 | 13452 | 128395245 | 4709869 | 133105114 | 0 |
| 15 | Manufacture of leather and related products | Governmental | 1 | 3436 | 27077795 | 264794 | 27342589 | 0 |
| | | Total | 1 | 3436 | 27077795 | 264794 | 27342589 | 0 |
| 18 | Printing and reproduction of recorded media | Governmental | 4 | 893 | 6310817 | 529106 | 6839923 | 0 |
| | | Public | 2 | 235 | 1979600 | 13886 | 1993486 | 0 |
| | | Private | 2 | 293 | 1845830 | 4300 | 1850130 | 0 |
| | | Total | 8 | 1421 | 10136247 | 547292 | 10683539 | 0 |
| 19 | Manufacture of coke and refined petroleum products | Governmental | 8 | 13743 | 271689351 | 27413326 | 299102677 | 0 |
| | | Public | 6 | 3096 | 65003400 | 4335523 | 69338923 | 0 |
| | | Private | 5 | 890 | 10709866 | 1405894 | 12115760 | 1 |
| | | Total | 19 | 17729 | 347402617 | 33154743 | 380557360 | 1 |

Number of industrial large establishments , employees wages and benefits by section and sector for 2015

Con. Table (5)

| Section | Manufacture | Sector | No. of establishments | Average no. of employee | Wage and (000ID)salary | (000ID)Benefits | ,Total wages salary and (000ID)benefits | Unpaid employees |
|----------------|------------------------------------------------------------------------------|---------------|------------------------------|--------------------------------|-------------------------------|------------------------|------------------------------------------------|-------------------------|
| 20 | Manufacture of chemicals and chemical products | Governmental | 4 | 9301 | 108506078 | 9926585 | 118432663 | 0 |
| | | Public | 4 | 3310 | 31532788 | 1286156 | 32818944 | 0 |
| | | Private | 5 | 180 | 900639 | 51223 | 951862 | 2 |
| | | Total | 13 | 12791 | 140939505 | 11263964 | 152203469 | 2 |
| 21 | Manufacture of basic pharmaceutical products and pharmaceutical preparations | Private | 2 | 64 | 352365 | 19920 | 372285 | 1 |
| | | Mixed | 1 | 56 | 331178 | 18241 | 349419 | 0 |
| | | Total | 3 | 120 | 683543 | 38161 | 721704 | 1 |
| 22 | Manufacture of rubber and plastic products | Governmental | 1 | 19 | 41274 | 0 | 41274 | 0 |
| | | Public | 1 | 712 | 4713216 | 429843 | 5143059 | 0 |
| | | Private | 5 | 166 | 1097480 | 126000 | 1223480 | 2 |
| | | Mixed | 1 | 203 | 2577980 | 364119 | 2942099 | 0 |
| | | Total | 8 | 1100 | 8429950 | 919962 | 9349912 | 2 |
| 23 | Manufacture of other non-metallic mineral products | Governmental | 6 | 15048 | 144048405 | 15961138 | 160009543 | 0 |
| | | Public | 3 | 145 | 822997 | 16387 | 839384 | 0 |
| | | Private | 343 | 18977 | 113294510 | 4529352 | 117823862 | 202 |
| | | Total | 352 | 34170 | 258165912 | 20506877 | 278672789 | 202 |

Number of industrial large establishments , employees wages and benefits by section and sector for 2015

Con. Table (5)

| Section | Manufacture | Sector | No. of establishments | Average no. of employee | Wage and (000ID)salary | (000ID)Benefits | ,Total wages salary and (000ID)benefits | Unpaid employees |
|----------------|-------------------------------------------------------------------------|---------------------|------------------------------|--------------------------------|-------------------------------|------------------------|------------------------------------------------|-------------------------|
| 24 | Manufacture of basic metals | Governmental | 1 | 1482 | 15279849 | 1875917 | 17155766 | 0 |
| | | Private | 2 | 100 | 282720 | 45936 | 328656 | 5 |
| | | Total | 3 | 1582 | 15562569 | 1921853 | 17484422 | 5 |
| 25 | Manufacture of fabricated metal products except machinery and equipment | Governmental | 1 | 2445 | 32610600 | 3952144 | 36562744 | 0 |
| | | Public | 2 | 3625 | 37371073 | 1803359 | 39174432 | 0 |
| | | Private | 1 | 56 | 443460 | 0 | 443460 | 0 |
| | | Total | 4 | 6126 | 70425133 | 5755503 | 76180636 | 0 |
| 26 | Manufacture of computer, electronic and optical products | Mixed Iraqi+foreign | 1 | 400 | 3425699 | 319091 | 3744790 | 0 |
| | | Total | 1 | 400 | 3425699 | 319091 | 3744790 | 0 |
| 27 | Manufacture of electrical equipment | Governmental | 3 | 5578 | 59356683 | 4455732 | 63812415 | 0 |
| | | Public | 2 | 5048 | 51358844 | 1936119 | 53294963 | 0 |
| | | Private | 2 | 61 | 309840 | 13512 | 323352 | 6 |
| | | Mixed | 2 | 637 | 4970998 | 909635 | 5880633 | 0 |
| | | Total | 9 | 11324 | 115996365 | 7314998 | 123311363 | 6 |

Number of industrial large establishments , employees wages and benefits by section and sector for 2015

Con. Table (5)

| Section | Manufacture | Sector | No. of establishments | Average no. of employee | Wage and (000ID)salary | (000ID)Benefits | ,Total wages salary and (000ID)benefits | Unpaid employees |
|----------------------------|--------------------------------------------------------------|---------------|------------------------------|--------------------------------|-------------------------------|------------------------|------------------------------------------------|-------------------------|
| 28 | Manufacture of machinery and equipment n.e.c | Governmental | 1 | 2807 | 30913668 | 3307731 | 34221399 | 0 |
| | | Public | 1 | 1182 | 11751223 | 1084107 | 12835330 | 0 |
| | | Total | 2 | 3989 | 42664891 | 4391838 | 47056729 | 0 |
| 29 | Manufacture of motor vehicles and trailers and semi-trailers | | 1 | 2455 | 28168388 | 3391090 | 31559478 | 0 |
| | | Private | 1 | 68 | 473500 | 5580 | 479080 | 0 |
| | | Total | 2 | 2523 | 28641888 | 3396670 | 32038558 | 0 |
| 30 | Manufacture of other transport equipment | Mixed | 1 | 169 | 1078115 | 180929 | 1259044 | 0 |
| | | Total | 1 | 169 | 1078115 | 180929 | 1259044 | 0 |
| 31 | Manufacture of furniture | Public | 2 | 168 | 770358 | 3400 | 773758 | 0 |
| | | Private | 2 | 57 | 181050 | 9580 | 190630 | 2 |
| | | Total | 4 | 225 | 951408 | 12980 | 964388 | 2 |
| Total manufacturing | | | 598 | 128472 | 1333861757 | 110267284 | 1444129041 | 300 |
| Grand total | | | 600 | 128724 | 1336002761 | 110672753 | 1446675514 | 300 |

Number of industrial large establishments, employees, wages and benefits by manufacture for 2015

Table (6)

| Activity | Manufacture | Sector | No. of establishments | Average No. of employee | Wage and salary (000ID) | Benefits (000ID) | Wage, salary and benefits | Unpaid employees * |
|----------|---------------------------------------------------|--------------|-----------------------|-------------------------|-------------------------|------------------|---------------------------|--------------------|
| B | Minming and quarrying | | | | | | | |
| 810 | Quarrying of stone,sand and clay | Public | 1 | 156 | 1414899 | 0 | 1414899 | 0 |
| | | Total | 1 | 156 | 1414899 | 0 | 1414899 | 0 |
| 893 | Extraction of salt | Public | 1 | 96 | 726105 | 405469 | 1131574 | 0 |
| | | Total | 1 | 96 | 726105 | 405469 | 1131574 | 0 |
| | Total | | 2 | 252 | 2141004 | 405469 | 2546473 | 0 |
| C | Manufacturing | | | | | | | |
| 1010 | Processing and preserving of meat | Private | 2 | 105 | 757200 | 26776 | 783976 | 1 |
| | | Total | 2 | 105 | 757200 | 26776 | 783976 | 1 |
| 1030 | Processing and preserving of fruit and vegetables | Private | 6 | 251 | 1142808 | 104970 | 1247778 | 1 |
| | | Mixed | 1 | 317 | 1392672 | 5685 | 1398357 | 0 |
| | | Total | 7 | 568 | 2535480 | 110655 | 2646135 | 1 |

Number of industrial large establishments, employees, wages and benefits by manufacture for 2015

Con. Table (6)

| Activity | Manufacture | Sector | No. of establishments | Average No. of employee | Wage and salary (000ID) | Benefits (000ID) | Wage, salary and benefits | Unpaid employees * |
|-----------------|---------------------------------------------------------|---------------|------------------------------|--------------------------------|--------------------------------|-------------------------|----------------------------------|---------------------------|
| 1050 | Manufacture of dairy products | Governmental | 1 | 232 | 665192 | 0 | 665192 | 0 |
| | | Public | 1 | 3770 | 24990770 | 1939673 | 26930443 | 0 |
| | | Private | 9 | 347 | 1492715 | 122312 | 1615027 | 5 |
| | | Total | 11 | 4349 | 27148677 | 2061985 | 29210662 | 5 |
| 1061 | Manufacture of grain mill products | Governmental | 1 | 2660 | 29659442 | 2402928 | 32062370 | 0 |
| | | Private | 113 | 3851 | 19651688 | 1259137 | 20910825 | 56 |
| | | Total | 114 | 6511 | 49311130 | 3662065 | 52973195 | 56 |
| 1071 | Manufacture of bakery products | Private | 1 | 162 | 1018208 | 111069 | 1129277 | 0 |
| | | Total | 1 | 162 | 1018208 | 111069 | 1129277 | 0 |
| 1072 | Manufacture of sugar | Private | 1 | 418 | 4224000 | 360000 | 4584000 | 0 |
| | | Total | 1 | 418 | 4224000 | 360000 | 4584000 | 0 |
| 1073 | Manufacture of cocoa, chocolate and sugar confectionary | Private | 3 | 293 | 1276354 | 118780 | 1395134 | 1 |
| | | Total | 3 | 293 | 1276354 | 118780 | 1395134 | 1 |

Number of industrial large establishments, employees, wages and benefits by manufacture for 2015

Con. Table (6)

| Activity | Manufacture | Sector | No. of establishments | Average No. of employee | Wage and salary (000ID) | Benefits (000ID) | Wage, salary and benefits | Unpaid employees * |
|-----------------|---------------------------------------------------------------------------------|---------------|------------------------------|--------------------------------|--------------------------------|-------------------------|----------------------------------|---------------------------|
| 1079 | Manufacture of other food products | Private | 3 | 70 | 334500 | 40820 | 375320 | 4 |
| | | Total | 3 | 70 | 334500 | 40820 | 375320 | 4 |
| 1080 | Manufacture of prepared animal feeds | Private | 1 | 21 | 125775 | 29500 | 155275 | 0 |
| | | Total | 1 | 21 | 125775 | 29500 | 155275 | 0 |
| 1101 | Distilling , rectifying and blending of spirits | Private | 1 | 36 | 332625 | 13855 | 346480 | 0 |
| | | Total | 1 | 36 | 332625 | 13855 | 346480 | 0 |
| 1104 | , Manufacture of soft drinks production mineral waters and other bottled waters | Private | 17 | 2181 | 14303298 | 4511505 | 18814803 | 11 |
| | | Mixed | 1 | 1245 | 13795963 | 2518504 | 16314467 | 0 |
| | | Total | 18 | 3426 | 28099261 | 7030009 | 35129270 | 11 |
| 1200 | Manufacture of tobacco products | Governmental | 1 | 1956 | 18721665 | 2002246 | 20723911 | 0 |
| | | Total | 1 | 1956 | 18721665 | 2002246 | 20723911 | 0 |
| 1311 | Spinning , weaving and finishing of textiles | Governmental | 3 | 10085 | 98187231 | 4481108 | 102668339 | 0 |
| | | Total | 3 | 10085 | 98187231 | 4481108 | 102668339 | 0 |

Number of industrial large establishments, employees, wages and benefits by manufacture for 2015

Con. Table (6)

| Activity | Manufacture | Sector | No. of establishments | Average No. of employee | Wage and salary (000ID) | Benefits (000ID) | Wage, salary and benefits | Unpaid employees * |
|-----------------|--------------------------------------------------------|---------------|------------------------------|--------------------------------|--------------------------------|-------------------------|----------------------------------|---------------------------|
| 1392 | Manufacture of made-up textile articles except apparel | Governmental | 1 | 2730 | 26855546 | 56796 | 26912342 | 0 |
| | | Total | 1 | 2730 | 26855546 | 56796 | 26912342 | 0 |
| 1393 | Manufacture of carpets and rugs | Governmental | 1 | 637 | 3352468 | 171965 | 3524433 | 0 |
| | | Total | 1 | 637 | 3352468 | 171965 | 3524433 | 0 |
| 1520 | Manufacture of footwear | Governmental | 1 | 3436 | 27077795 | 264794 | 27342589 | 0 |
| | | Total | 1 | 3436 | 27077795 | 264794 | 27342589 | 0 |
| 1811 | Printing | Governmental | 4 | 893 | 6310817 | 529106 | 6839923 | 0 |
| | | Public | 2 | 235 | 1979600 | 13886 | 1993486 | 0 |
| | | Private | 2 | 293 | 1845830 | 4300 | 1850130 | 0 |
| | | Total | 8 | 1421 | 10136247 | 547292 | 10683539 | 0 |
| 1910 | Manufacture of coke and refined petroleum products | Governmental | 6 | 114 | 683069 | 15792 | 698861 | 0 |
| | | Public | 5 | 113 | 852803 | 17072 | 869875 | 0 |
| | | Private | 1 | 26 | 33150 | 4950 | 38100 | 0 |
| | | Total | 12 | 253 | 1569022 | 37814 | 1606836 | 0 |

Number of industrial large establishments, employees, wages and benefits by manufacture for 2015

Con. Table (6)

| Activity | Manufacture | Sector | No. of establishments | Average No. of employee | Wage and salary (000ID) | Benefits (000ID) | Wage, salary and benefits | Unpaid employees * |
|-----------------|----------------------------------------------------------------------------------|---------------|------------------------------|--------------------------------|--------------------------------|-------------------------|----------------------------------|---------------------------|
| 1920 | Manufacture of refined petroleum products | Governmental | 2 | 13629 | 271006282 | 27397534 | 298403816 | 0 |
| | | Public | 1 | 2983 | 64150597 | 4318451 | 68469048 | 0 |
| | | Private | 4 | 864 | 10676716 | 1400944 | 12077660 | 1 |
| | | Total | 7 | 17476 | 345833595 | 33116929 | 378950524 | 1 |
| 2011 | Manufacture of basic chemicals | Governmental | 2 | 2605 | 27537115 | 447663 | 27984778 | 0 |
| | | Public | 4 | 3310 | 31532788 | 1286156 | 32818944 | 0 |
| | | Total | 6 | 5915 | 59069903 | 1733819 | 60803722 | 0 |
| 2012 | Manufacture of fertilizers and nitrogen compounds | Governmental | 1 | 3112 | 46760874 | 5062730 | 51823604 | 0 |
| | | Total | 1 | 3112 | 46760874 | 5062730 | 51823604 | 0 |
| 2013 | Manufacture of pf plastics and synthetic rubber in primary forms | Private | 1 | 9 | 52200 | 1985 | 54185 | 0 |
| | | Total | 1 | 9 | 52200 | 1985 | 54185 | 0 |
| 2022 | Manufacture of paints, varnishes and similar coatings, printing inks and mastics | Private | 2 | 139 | 743200 | 39561 | 782761 | 0 |
| | | Total | 2 | 139 | 743200 | 39561 | 782761 | 0 |

Number of industrial large establishments, employees, wages and benefits by manufacture for 2015

Con. Table (6)

| Activity | Manufacture | Sector | No. of establishments | Average No. of employee | Wage and salary (000ID) | Benefits (000ID) | Wage, salary and benefits | Unpaid employees * |
|-----------------|-----------------------------------------------------------------------------------------------------------|---------------|------------------------------|--------------------------------|--------------------------------|-------------------------|----------------------------------|---------------------------|
| 2023 | Manufacture of soap and detergentsm cleaning and polishing preparations, perdumes and toilet preparations | Governmental | 1 | 3584 | 34208089 | 4416192 | 38624281 | 0 |
| | | Private | 1 | 27 | 87689 | 8861 | 96550 | 2 |
| | | Total | 2 | 3611 | 34295778 | 4425053 | 38720831 | 2 |
| 2029 | Manufacture of other other chemical products n.e.c | Private | 1 | 5 | 17550 | 816 | 18366 | 0 |
| | | Total | 1 | 5 | 17550 | 816 | 18366 | 0 |
| 2100 | Manufacture of basic pharmaceuticals, medical chemical and botancial products | Private | 2 | 64 | 352365 | 19920 | 372285 | 1 |
| | | Mixed | 1 | 56 | 331178 | 18241 | 349419 | 0 |
| | | Total | 3 | 120 | 683543 | 38161 | 721704 | 1 |
| 2220 | Manufacture of plastic products | Governmental | 1 | 19 | 41274 | 0 | 41274 | 0 |
| | | Public | 1 | 712 | 4713216 | 429843 | 5143059 | 0 |
| | | Private | 5 | 166 | 1097480 | 126000 | 1223480 | 2 |
| | | Mixed | 1 | 203 | 2577980 | 364119 | 2942099 | 0 |
| | | Total | 8 | 1100 | 8429950 | 919962 | 9349912 | 2 |

Number of industrial large establishments, employees, wages and benefits by manufacture for 2015

Con. Table (6)

| Activity | Manufacture | Sector | No. of establishments | Average No. of employee | Wage and salary (000ID) | Benefits (000ID) | Wage, salary and benefits | Unpaid employees * |
|----------|------------------------------------------------------------|--------------|-----------------------|-------------------------|-------------------------|------------------|---------------------------|--------------------|
| 2391 | Manufacture of refractory products | Private | 1 | 19 | 99396 | 6480 | 105876 | 2 |
| | | Total | 1 | 19 | 99396 | 6480 | 105876 | 2 |
| 2392 | Manufacture of clay building materials | Governmental | 1 | 246 | 1959900 | 24192 | 1984092 | 0 |
| | | Private | 333 | 18203 | 109412938 | 4206700 | 113619638 | 195 |
| | | Total | 334 | 18449 | 111372838 | 4230892 | 115603730 | 195 |
| 2394 | Manufacture of cement, lime and plaster | Governmental | 2 | 9485 | 100031519 | 11932567 | 111964086 | 0 |
| | | Private | 1 | 62 | 240000 | 51137 | 291137 | 3 |
| | | Total | 3 | 9547 | 100271519 | 11983704 | 112255223 | 3 |
| 2395 | ,Manufacture of articles of concrete cement and plaster | Governmental | 3 | 5317 | 42056986 | 4004379 | 46061365 | 0 |
| | | Public | 3 | 145 | 822997 | 16387 | 839384 | 0 |
| | | Private | 8 | 693 | 3542176 | 265035 | 3807211 | 2 |
| | | Total | 14 | 6155 | 46422159 | 4285801 | 50707960 | 2 |
| 2410 | Manufacture of basic iron and steel | Governmental | 1 | 1482 | 15279849 | 1875917 | 17155766 | 0 |
| | | Private | 1 | 53 | 32720 | 3000 | 35720 | 5 |
| | | Total | 2 | 1535 | 15312569 | 1878917 | 17191486 | 5 |
| 2420 | Manufacture of basic precious and other non-ferrous metals | Private | 1 | 47 | 250000 | 42936 | 292936 | 0 |
| | | Total | 1 | 47 | 250000 | 42936 | 292936 | 0 |

Number of industrial large establishments, employees, wages and benefits by manufacture for 2015

Con. Table (6)

| Activity | Manufacture | Sector | No. of establishments | Average No. of employee | Wage and salary (000ID) | Benefits (000ID) | Wage, salary and benefits | Unpaid employees * |
|----------|--------------------------------------------------------------------------------------------------------------|--------------|-----------------------|-------------------------|-------------------------|------------------|---------------------------|--------------------|
| 2511 | Manufacture of structural metal products | Public | 2 | 3625 | 37371073 | 1803359 | 39174432 | 0 |
| | | Private | 1 | 56 | 443460 | 0 | 443460 | 0 |
| | | Total | 3 | 3681 | 37814533 | 1803359 | 39617892 | 0 |
| 2512 | Manufacture of tanks, reservoirs and containers of metal | Governmental | 1 | 2445 | 32610600 | 3952144 | 36562744 | 0 |
| | | Total | 1 | 2445 | 32610600 | 3952144 | 36562744 | 0 |
| 2640 | Manufacture of consumer electronics (except foreign) | Mixed | 1 | 400 | 3425699 | 319091 | 3744790 | 0 |
| | | Total | 1 | 400 | 3425699 | 319091 | 3744790 | 0 |
| 2710 | Manufacture of electric motors, generators, transformers, and electricity distribution and control apparatus | Governmental | 1 | 575 | 8455755 | 1144785 | 9600540 | 0 |
| | | Public | 1 | 2559 | 27212967 | 851149 | 28064116 | 0 |
| | | Total | 2 | 3134 | 35668722 | 1995934 | 37664656 | 0 |
| 2720 | Manufacture of batteries and accumulators | Governmental | 1 | 1551 | 14590613 | 27196 | 14617809 | 0 |
| | | Total | 1 | 1551 | 14590613 | 27196 | 14617809 | 0 |
| 2732 | Manufacture of other electronic and electric wires and cables | Governmental | 1 | 3452 | 36310315 | 3283751 | 39594066 | 0 |
| | | Total | 1 | 3452 | 36310315 | 3283751 | 39594066 | 0 |
| 2750 | Manufacture of domestic appliance | Private | 2 | 61 | 309840 | 13512 | 323352 | 6 |
| | | Mixed | 2 | 637 | 4970998 | 909635 | 5880633 | 0 |
| | | Total | 4 | 698 | 5280838 | 923147 | 6203985 | 6 |

Number of industrial large establishments, employees, wages and benefits by manufacture for 2015

Con. Table (6)

| Activity | Manufacture | Sector | No. of establishments | Average No. of employee | Wage and salary (000ID) | Benefits (000ID) | Wage, salary and benefits | Unpaid employees * |
|-----------------|-----------------------------------------------------------------|---------------|------------------------------|--------------------------------|--------------------------------|-------------------------|----------------------------------|---------------------------|
| 2790 | Manufacture of other electrical equipment | Public | 1 | 2489 | 24145877 | 1084970 | 25230847 | 0 |
| | | Total | 1 | 2489 | 24145877 | 1084970 | 25230847 | 0 |
| 2821 | Manufacture of agricultural and forestry machinery | Governmental | 1 | 2807 | 30913668 | 3307731 | 34221399 | 0 |
| | | Total | 1 | 2807 | 30913668 | 3307731 | 34221399 | 0 |
| 2824 | Manufacture of machinery for mining, quarrying and construction | Public | 1 | 1182 | 11751223 | 1084107 | 12835330 | 0 |
| | | Total | 1 | 1182 | 11751223 | 1084107 | 12835330 | 0 |

Number of industrial large establishments, employees, wages and benefits by manufacture for 2015

Con. Table (6)

| Activity | Manufacture | Sector | No. of establishments | Average No. of employee | Wage and salary (000ID) | Benefits (000ID) | Wage, salary and benefits | Unpaid employees * |
|----------------------------|---------------------------------------------------------------------------------------------------------------|---------------|------------------------------|--------------------------------|--------------------------------|-------------------------|----------------------------------|---------------------------|
| 2910 | Manufacture of motor -vehicles | Governmental | 1 | 2455 | 28168388 | 3391090 | 31559478 | 0 |
| | | Total | 1 | 2455 | 28168388 | 3391090 | 31559478 | 0 |
| 2920 | (coachwork)Manufacture of bodies , for motor vehicles, manufacture -manufacture of trailers and semi trailers | Private | 1 | 68 | 473500 | 5580 | 479080 | 0 |
| | | Total | 1 | 68 | 473500 | 5580 | 479080 | 0 |
| 3092 | Manufacture of bicycles and invalid carriages | Mixed | 1 | 169 | 1078115 | 180929 | 1259044 | 0 |
| | | Total | 1 | 169 | 1078115 | 180929 | 1259044 | 0 |
| 3100 | Manufacture of furniture | Public | 2 | 168 | 770358 | 3400 | 773758 | 0 |
| | | Private | 2 | 57 | 181050 | 9580 | 190630 | 2 |
| | | Total | 4 | 225 | 951408 | 12980 | 964388 | 2 |
| Total manufacturing | | | 598 | 128472 | 1333861757 | 110267284 | 1444129041 | 300 |
| Grand total | | | 600 | 128724 | 1336002761 | 110672753 | 1446675514 | 300 |

Value of sales and production by section and sector for 2015

| Section Manufacture | | Sector | Total sales value | Complete production | Incomplete production | Revenues of service | Total production at | Production value at |
|-----------------------------------|----------------------|-----------------------|-------------------|---------------------|-----------------------|---------------------|---------------------|---------------------|
| B | Mining and quarrying | Public | 6073548 | 6073548 | 0 | 0 | 6073548 | 6073548 |
| | | Total | 6073548 | 6073548 | 0 | 0 | 6073548 | 6073548 |
| Total mining and quarrying | | | 6073548 | 6073548 | 0 | 0 | 6073548 | 6073548 |
| C | Manufacturing | Governmental | 3389366597 | 3440291916 | 12780862 | 34997239 | 3488070017 | 3488068815 |
| | | Public | 246037546 | 245408029 | 573658 | 2650717 | 248632404 | 248310783 |
| | | Private | 1371599214 | 1371077431 | 200000 | 135256486 | 1506533917 | 1506426762 |
| | | Mixed | 216063006 | 215425976 | 963905- | 2089157 | 216551228 | 216551228 |
| | | Mixed (Iraqi+foreign) | 3369957 | 3199856 | 0 | 273732 | 3473588 | 3473588 |
| | | Total | 5226436320 | 5275403208 | 12590615 | 175267331 | 5463261154 | 5462831176 |
| Total manufacturing | | | 5226436320 | 5275403208 | 12590615 | 175267331 | 5463261154 | 5462831176 |
| Grand total | | | 5232509868 | 5281476756 | 12590615 | 175267331 | 5469334702 | 5468904724 |

Value of sales and production by division and sector for 2015

Table (8) to be continued

(000ID)

| Section | Manufacture | Sector | Total sales value | Completed production value | Incomplete d production value and other products | Revenues of service activity and employing for others | Total production at) market price (producer price | Production value at production factors cost price |
|-----------------------------------|----------------------------------|--------------|-------------------|----------------------------|--------------------------------------------------|-------------------------------------------------------|----------------------------------------------------|---------------------------------------------------|
| B | Minming and quarrying | | | | | | | |
| 8 | Quarrying of stone,sand and clay | Public | 6073548 | 6073548 | 0 | 0 | 6073548 | 6073548 |
| Total mining and quarrying | | | 6073548 | 6073548 | 0 | 0 | 6073548 | 6073548 |
| C | Manufacturing | | | | | | | |
| 10 | Manufacture of food products | Governmental | 60026015 | 60026015 | 21399 | 1336062 | 61383476 | 61383476 |
| | | Public | 7289412 | 7289412 | 0 | 0 | 7289412 | 7289412 |
| | | Private | 403648656 | 403127808 | 0 | 126018064 | 529145872 | 529145872 |
| | | Mixed | 3135855 | 3135855 | 0 | 0 | 3135855 | 3135855 |
| | | Total | 474099938 | 473579090 | 21399 | 127354126 | 600954615 | 600954615 |
| 11 | Manufacture of beverages | Private | 257555069 | 257555069 | 0 | 4000 | 257559069 | 257559069 |
| | | Mixed | 209828702 | 210718844 | 766829- | 746403 | 210698418 | 210698418 |
| | | Total | 467383771 | 468273913 | 766829- | 750403 | 468257487 | 468257487 |
| 12 | Manufacture of tobacco products | Governmental | 1760000 | 1368250 | 38261 | 518505 | 1925016 | 1925016 |
| | | Total | 1760000 | 1368250 | 38261 | 518505 | 1925016 | 1925016 |
| 13 | Manufacture of textiles | Governmental | 15781865 | 14775389 | 902569- | 550022 | 14422842 | 14422842 |
| | | Total | 15781865 | 14775389 | 902569- | 550022 | 14422842 | 14422842 |

Value of sales and production by section and sector for 2015

on. Table (8)

(000ID)

| Section | Manufacture | Sector | Total sales value | Completed production value | Incomplete production value and other products | Revenues of service activity and employing for others | Total production at) market price (producer price | Production value at production factors cost price |
|---------|------------------------------------------------------------------------------|--------------|-------------------|----------------------------|------------------------------------------------|-------------------------------------------------------|----------------------------------------------------|---------------------------------------------------|
| 15 | Manufacture of leather and related products | Governmental | 8950805 | 8188033 | 311269- | 15550 | 7892314 | 7892314 |
| | | Total | 8950805 | 8188033 | 311269- | 15550 | 7892314 | 7892314 |
| 18 | Printing and reproduction of recorded media | Governmental | 3062744 | 3084896 | 545- | 17313 | 3101664 | 3101664 |
| | | Public | 40579648 | 40579648 | 0 | 0 | 40579648 | 40579648 |
| | | Private | 974494 | 974494 | 0 | 0 | 974494 | 974494 |
| | | Total | 44616886 | 44639038 | 545- | 17313 | 44655806 | 44655806 |
| 19 | Manufacture of coke and refined petroleum products | Governmental | 2762924306 | 2816257675 | 2361639 | 1126646 | 2819745960 | 2819745960 |
| | | Public | 116323693 | 137527083 | 0 | 210986 | 137738069 | 137416448 |
| | | Private | 77368102 | 77368102 | 0 | 9152075 | 86520177 | 86520177 |
| | | Total | 2956616101 | 3031152860 | 2361639 | 10489707 | 3044004206 | 3043682585 |
| 20 | Manufacture of chemicals and chemical products | Governmental | 19871215 | 37112741 | 2998481 | 1366978 | 41478200 | 41476998 |
| | | Public | 13327886 | 13216809 | 0 | 439086 | 13655895 | 13655895 |
| | | Private | 13627229 | 13626294 | 0 | 0 | 13626294 | 13626294 |
| | | Total | 46826330 | 63955844 | 2998481 | 1806064 | 68760389 | 68759187 |
| 21 | Manufacture of basic pharmaceutical products and pharmaceutical preparations | Private | 873965 | 873965 | 0 | 0 | 873965 | 873965 |
| | | Mixed | 468096 | 497333 | 0 | 0 | 497333 | 497333 |
| | | Total | 1342061 | 1371298 | 0 | 0 | 1371298 | 1371298 |

Value of sales and production by section and sector for 2015

on. Table (8)

(000ID)

| Section | Manufacture | Sector | Total sales value | Completed production value | Incomplete production value and other products | Revenues of service activity and employing for others | Total production at) market price (producer price | Production value at production factors cost price |
|---------|-------------------------------------------------------------------------|--------------|----------------------------------------------------------|----------------------------|------------------------------------------------|-------------------------------------------------------|----------------------------------------------------|---------------------------------------------------|
| 22 | Manufacture of rubber and plastic products | Governmental | 187590 | 187590 | 0 | 0 | 187590 | 187590 |
| | | Public | 376559 | 363907 | 0 | 658532 | 1022439 | 1022439 |
| | | Private | 24883558 | 24883558 | 0 | 0 | 24883558 | 24883558 |
| | | Mixed | 491426 | 479643 | 35562 | 500 | 515705 | 515705 |
| | | Total | 25939133 | 25914698 | 35562 | 659032 | 26609292 | 26609292 |
| 23 | Manufacture of other non-metallic mineral products | Governmental | 373288379 | 373013463 | 8379062 | 144860 | 381537385 | 381537385 |
| | | Public | 1531977 | 1542904 | 0 | 0 | 1542904 | 1542904 |
| | | Private | 582240158 | 582240158 | 0 | 82347 | 582322505 | 582215350 |
| | | Total | 957060514 | 956796525 | 8379062 | 227207 | 965402794 | 965295639 |
| | | 24 | Manufacture of basic metals | Governmental | 26170536 | 20258462 | 3546373 | 0 |
| Private | 1002600 | | | 1002600 | 200000 | 0 | 1202600 | 1202600 |
| Total | 27173136 | | | 21261062 | 3746373 | 0 | 25007435 | 25007435 |
| 25 | Manufacture of fabricated metal products except machinery and equipment | Governmental | 11146612 | 11309863 | 2518126 | 595063 | 14423052 | 14423052 |
| | | Public | 7038909 | 6655986 | 0 | 6133 | 6662119 | 6662119 |
| | | Private | 1169608 | 1169608 | 0 | 0 | 1169608 | 1169608 |
| | | Total | 19355129 | 19135457 | 2518126 | 601196 | 22254779 | 22254779 |
| | | 26 | Manufacture of computer, electronic and optical products | Mixed (Iraqi+fo | 3369957 | 3199856 | 0 | 273732 |
| Total | 3369957 | | | 3199856 | 0 | 273732 | 3473588 | 3473588 |

Value of sales and production by section and sector for 2015

on. Table (8)

(000ID)

| Section | Manufacture | Sector | Total sales value | Completed production value | Incomplete production value and other products | Revenues of service activity and employing for others | Total production at) market price (producer price | Production value at production factors cost price |
|----------------------------|--------------------------------------------------------------|--------------|-------------------|----------------------------|------------------------------------------------|-------------------------------------------------------|----------------------------------------------------|---------------------------------------------------|
| 27 | Manufacture of electrical equipment | Governmental | 35763277 | 32664777 | 6626575- | 67681 | 26105883 | 26105883 |
| | | Public | 49214576 | 27916226 | 568508 | 1335980 | 29820714 | 29820714 |
| | | Private | 4942100 | 4942100 | 0 | 0 | 4942100 | 4942100 |
| | | Mixed | 1637861 | 283964 | 232517- | 1327609 | 1379056 | 1379056 |
| | | Total | 91557814 | 65807067 | 6290584- | 2731270 | 62247753 | 62247753 |
| 28 | Manufacture of machinery and equipment n.e.c | Governmental | 5543048 | 4379683 | 250180 | 328621 | 4958484 | 4958484 |
| | | Public | 9845094 | 9845094 | 5150 | 0 | 9850244 | 9850244 |
| | | Total | 15388142 | 14224777 | 255330 | 328621 | 14808728 | 14808728 |
| 29 | Manufacture of motor vehicles and trailers and semi-trailers | Governmental | 64890205 | 57665079 | 508299 | 28929938 | 87103316 | 87103316 |
| | | Private | 2945000 | 2945000 | 0 | 0 | 2945000 | 2945000 |
| | | Total | 67835205 | 60610079 | 508299 | 28929938 | 90048316 | 90048316 |
| 30 | Manufacture of other transport equipment | Mixed | 501066 | 310337 | 121- | 14645 | 324861 | 324861 |
| | | Total | 501066 | 310337 | 121- | 14645 | 324861 | 324861 |
| 31 | Manufacture of furniture | Public | 509792 | 470960 | 0 | 0 | 470960 | 470960 |
| | | Private | 368675 | 368675 | 0 | 0 | 368675 | 368675 |
| | | Total | 878467 | 839635 | 0 | 0 | 839635 | 839635 |
| Total manufacturing | | | 5226436320 | 5275403208 | 12590615 | 175267331 | 5463261154 | 5462831176 |
| Grand total | | | 5232509868 | 5281476756 | 12590615 | 175267331 | 5469334702 | 5468904724 |

Value of sales and production by activity and sector for 2015

Table (9) to be continued

| | | | | | | | | | (000ID) |
|----------|---------------------------------------------------|--------------|-------------------|---------------------------|----------------------------|-------------------------------------------------------|----------------------------------------------------|--------------------------------------------------------|---------|
| Activity | Manufacture | Sector | Total sales value | Complete production value | Incomplet production value | Revenues of service activity and operating for others | Total production at market price (producer price) | Production value of at cost price production (factors) | |
| B | Minming and quarrying | | | | | | | | |
| 810 | Quarrying of stone,sand and clay | Public | 1097988 | 1097988 | 0 | 0 | 1097988 | 1097988 | |
| | | Total | 1097988 | 1097988 | 0 | 0 | 1097988 | 1097988 | |
| 893 | Extraction of salt | Public | 4975560 | 4975560 | 0 | 0 | 4975560 | 4975560 | |
| | | Total | 4975560 | 4975560 | 0 | 0 | 4975560 | 4975560 | |
| | Total mining and quarrying | | 6073548 | 6073548 | 0 | 0 | 6073548 | 6073548 | |
| C | Manufacturing | Private | 7461818 | 7461818 | 0 | 0 | 7461818 | 7461818 | |
| 1010 | Processing and preserving of meat | Total | 7461818 | 7461818 | 0 | 0 | 7461818 | 7461818 | |
| 1030 | Processing and preserving of fruit and vegetables | Private | 9864348 | 9872348 | 0 | 0 | 9872348 | 9872348 | |
| | | Mixed | 3135855 | 3135855 | 0 | 0 | 3135855 | 3135855 | |
| | | Total | 13000203 | 13008203 | 0 | 0 | 13008203 | 13008203 | |
| 1050 | Manufacture of dairy products | Governmental | 770994 | 770994 | 0 | 0 | 770994 | 770994 | |
| | | Public | 7289412 | 7289412 | 0 | 0 | 7289412 | 7289412 | |
| | | Private | 12629270 | 12641490 | 0 | 0 | 12641490 | 12641490 | |
| | | Total | 20689676 | 20701896 | 0 | 0 | 20701896 | 20701896 | |

Value of sales and production by activity and sector for 2015

Con. Table (9)

| | | (000ID) | | | | | | |
|----------|---------------------------------------------------------|--------------|-------------------|---------------------------|-----------------------------|-------------------------------------------------------|---------------------------------------------------|--------------------------------------------------------|
| Activity | Manufacture | Sector | Total sales value | Complete production value | Incomplete production value | Revenues of service activity and operating for others | Total production at market price (producer price) | Production value of at cost price production (factors) |
| 1061 | Manufacture of grain mill products | Governmental | 59255021 | 59255021 | 21399 | 1336062 | 60612482 | 60612482 |
| | | Private | 0 | 0 | 0 | 126018064 | 126018064 | 126018064 |
| | | Total | 59255021 | 59255021 | 21399 | 127354126 | 186630546 | 186630546 |
| 1071 | Manufacture of bakery products | Private | 5139974 | 5101152 | 0 | 0 | 5101152 | 5101152 |
| | | Total | 5139974 | 5101152 | 0 | 0 | 5101152 | 5101152 |
| 1072 | Manufacture of sugar | Private | 350545096 | 350545096 | 0 | 0 | 350545096 | 350545096 |
| | | Total | 350545096 | 350545096 | 0 | 0 | 350545096 | 350545096 |
| 1073 | Manufacture of cocoa, chocolate and sugar confectionary | Private | 7609390 | 7107144 | 0 | 0 | 7107144 | 7107144 |
| | | Total | 7609390 | 7107144 | 0 | 0 | 7107144 | 7107144 |
| 1079 | Manufacture of other food products | Private | 2940010 | 2940010 | 0 | 0 | 2940010 | 2940010 |
| | | Total | 2940010 | 2940010 | 0 | 0 | 2940010 | 2940010 |
| 1080 | Manufacture of prepared animal feeds | Private | 7458750 | 7458750 | 0 | 0 | 7458750 | 7458750 |
| | | Total | 7458750 | 7458750 | 0 | 0 | 7458750 | 7458750 |
| 1101 | Distilling , rectifying and blending of spirits | Private | 1872000 | 1872000 | 0 | 0 | 1872000 | 1872000 |
| | | Total | 1872000 | 1872000 | 0 | 0 | 1872000 | 1872000 |

Value of sales and production by activity and sector for 2015

Con. Table (9)

(000ID)

| Activity | Manufacture | Sector | Total sales value | Complete production value | Incomplete production value | Revenues of service activity and operating for others | Total production at market price (producer price) | Production value of at cost price production (factors) |
|-----------------|---------------------------------------------------------------------------------|---------------|--------------------------|----------------------------------|------------------------------------|--------------------------------------------------------------|----------------------------------------------------------|---------------------------------------------------------------|
| 1104 | Manufacture of soft drinks , production mineral waters and other bottled waters | Private | 255683069 | 255683069 | 0 | 4000 | 255687069 | 255687069 |
| | | Mixed | 209828702 | 210718844 | 766829- | 746403 | 210698418 | 210698418 |
| | | Total | 465511771 | 466401913 | 766829- | 750403 | 466385487 | 466385487 |
| 1200 | Manufacture of tobacco products | Governmental | 1760000 | 1368250 | 38261 | 518505 | 1925016 | 1925016 |
| | | Total | 1760000 | 1368250 | 38261 | 518505 | 1925016 | 1925016 |
| 1311 | Spinning , weaving and finishing of textiles | Governmental | 9206315 | 9562166 | 924899- | 514344 | 9151611 | 9151611 |
| | | Total | 9206315 | 9562166 | 924899- | 514344 | 9151611 | 9151611 |
| 1392 | Manufacture of made-up textile articles except apparel | Governmental | 5134327 | 3772000 | 22330 | 34699 | 3829029 | 3829029 |
| | | Total | 5134327 | 3772000 | 22330 | 34699 | 3829029 | 3829029 |
| 1393 | Manufacture of carpets and rugs | Governmental | 1441223 | 1441223 | 0 | 979 | 1442202 | 1442202 |
| | | Total | 1441223 | 1441223 | 0 | 979 | 1442202 | 1442202 |
| 1520 | Manufacture of footwear | Governmental | 8950805 | 8188033 | 311269- | 15550 | 7892314 | 7892314 |
| | | Total | 8950805 | 8188033 | 311269- | 15550 | 7892314 | 7892314 |
| 1811 | Printing | Governmental | 3062744 | 3084896 | 545- | 17313 | 3101664 | 3101664 |
| | | Public | 40579648 | 40579648 | 0 | 0 | 40579648 | 40579648 |
| | | Private | 974494 | 974494 | 0 | 0 | 974494 | 974494 |
| | | Total | 44616886 | 44639038 | 545- | 17313 | 44655806 | 44655806 |

Value of sales and production by activity and sector for 2015

Con. Table (9)

| | | | | | | | | (000ID) |
|----------|----------------------------------------------------------------------------------|--------------|-------------------|---------------------------|-----------------------------|-------------------------------------------------------|---------------------------------------------------|--------------------------------------------------------|
| Activity | Manufacture | Sector | Total sales value | Complete production value | Incomplete production value | Revenues of service activity and operating for others | Total production at market price (producer price) | Production value of at cost price production (factors) |
| 1910 | Manufacture of coke and refined petroleum products | Governmental | 14954975 | 14954975 | 0 | 0 | 14954975 | 14954975 |
| | | Public | 1826583 | 1826583 | 0 | 0 | 1826583 | 1826583 |
| | | Private | 318000 | 318000 | 0 | 0 | 318000 | 318000 |
| | | Total | 17099558 | 17099558 | 0 | 0 | 17099558 | 17099558 |
| 1920 | Manufacture of refined petroleum products | Governmental | 2747969331 | 2801302700 | 2361639 | 1126646 | 2804790985 | 2804790985 |
| | | Public | 1144971110 | 135700500 | 0 | 210986 | 135911486 | 135589865 |
| | | Private | 77050102 | 77050102 | 0 | 9152075 | 86202177 | 86202177 |
| | | Total | 2939516543 | 3014053302 | 2361639 | 10489707 | 3026904648 | 3026583027 |
| 2011 | Manufacture of basic chemicals | Governmental | 2175321 | 2750619 | 77900 | 438112 | 3266631 | 3266631 |
| | | Public | 13327886 | 13216809 | 0 | 439086 | 13655895 | 13655895 |
| | | Total | 15503207 | 15967428 | 77900 | 877198 | 16922526 | 16922526 |
| 2012 | Manufacture of fertilizers and nitrogen compounds | Governmental | 14814500 | 31465500 | 0 | 455765 | 31921265 | 31921265 |
| | | Total | 14814500 | 31465500 | 0 | 455765 | 31921265 | 31921265 |
| 2013 | Manufacture of plastics and synthetic rubber in primary forms | Private | 487330 | 487330 | 0 | 0 | 487330 | 487330 |
| | | Total | 487330 | 487330 | 0 | 0 | 487330 | 487330 |
| 2022 | Manufacture of paints, varnishes and similar coatings, printing inks and mastics | Private | 12115329 | 12115329 | 0 | 0 | 12115329 | 12115329 |
| | | Total | 12115329 | 12115329 | 0 | 0 | 12115329 | 12115329 |

Value of sales and production by activity and sector for 2015

Con. Table (9)

| | | | | | | | | (000ID) |
|----------|-----------------------------------------------------------------------------------------------------------|--------------|-------------------|---------------------------|-----------------------------|-------------------------------------------------------|---------------------------------------------------|--------------------------------------------------------|
| Activity | Manufacture | Sector | Total sales value | Complete production value | Incomplete production value | Revenues of service activity and operating for others | Total production at market price (producer price) | Production value of at cost price production (factors) |
| 2023 | Manufacture of soap and detergentsm ,cleaning and polishing preparations perdumes and toilet preparations | Governmental | 2881394 | 2896622 | 2920581 | 473101 | 6290304 | 6289102 |
| | | Private | 1014900 | 1013965 | 0 | 0 | 1013965 | 1013965 |
| | | Total | 3896294 | 3910587 | 2920581 | 473101 | 7304269 | 7303067 |
| 2029 | Manufacture of other chemical products n.e.c | Private | 9670 | 9670 | 0 | 0 | 9670 | 9670 |
| | | Total | 9670 | 9670 | 0 | 0 | 9670 | 9670 |
| 2100 | ,Manufacture of basic pharmaceuticals medical chemical and botancial products | Private | 873965 | 873965 | 0 | 0 | 873965 | 873965 |
| | | Mixed | 468096 | 497333 | 0 | 0 | 497333 | 497333 |
| | | Total | 1342061 | 1371298 | 0 | 0 | 1371298 | 1371298 |
| 2220 | Manufacture of plastic products | Governmental | 187590 | 187590 | 0 | 0 | 187590 | 187590 |
| | | Public | 376559 | 363907 | 0 | 658532 | 1022439 | 1022439 |
| | | Private | 24883558 | 24883558 | 0 | 0 | 24883558 | 24883558 |
| | | Mixed | 491426 | 479643 | 35562 | 500 | 515705 | 515705 |
| | | Total | 25939133 | 25914698 | 35562 | 659032 | 26609292 | 26609292 |
| 2391 | Manufacture of refractory products | Private | 557520 | 557520 | 0 | 0 | 557520 | 557520 |
| | | Total | 557520 | 557520 | 0 | 0 | 557520 | 557520 |
| 2392 | Manufacture of clay building materials | Governmental | 2106000 | 2106000 | 0 | 0 | 2106000 | 2106000 |
| | | Private | 457082053 | 457082053 | 0 | 0 | 457082053 | 457082053 |
| | | Total | 459188053 | 459188053 | 0 | 0 | 459188053 | 459188053 |

Value of sales and production by activity and sector for 2015

Con. Table (9)

(000ID)

| Activity | Manufacture | Sector | Total sales value | Complete production value | Incomplete production value | Revenues of service activity and operating for others | Total production at market price (producer price) | Production value of at cost price production (factors) |
|----------|------------------------------------------------------------|--------------|-------------------|---------------------------|-----------------------------|-------------------------------------------------------|---------------------------------------------------|--------------------------------------------------------|
| 2394 | Manufacture of cement, lime and plaster | Governmental | 368146488 | 367559618 | 8388474 | 30610 | 375978702 | 375978702 |
| | | Private | 89285119 | 89285119 | 0 | 0 | 89285119 | 89177964 |
| | | Total | 457431607 | 456844737 | 8388474 | 30610 | 465263821 | 465156666 |
| 2395 | ,Manufacture of articles of concrete cement and plaster | Governmental | 3035891 | 3347845 | 9412- | 114250 | 3452683 | 3452683 |
| | | Public | 1531977 | 1542904 | 0 | 0 | 1542904 | 1542904 |
| | | Private | 35315466 | 35315466 | 0 | 82347 | 35397813 | 35397813 |
| | | Total | 39883334 | 40206215 | 9412- | 196597 | 40393400 | 40393400 |
| 2410 | Manufacture of basic iron and steel | Governmental | 26170536 | 20258462 | 3546373 | 0 | 23804835 | 23804835 |
| | | Private | 495000 | 495000 | 0 | 0 | 495000 | 495000 |
| | | Total | 26665536 | 20753462 | 3546373 | 0 | 24299835 | 24299835 |
| 2420 | Manufacture of basic precious and other non-ferrous metals | Private | 507600 | 507600 | 200000 | 0 | 707600 | 707600 |
| | | Total | 507600 | 507600 | 200000 | 0 | 707600 | 707600 |
| 2511 | Manufacture of structural metal products | Public | 7038909 | 6655986 | 0 | 6133 | 6662119 | 6662119 |
| | | Private | 1169608 | 1169608 | 0 | 0 | 1169608 | 1169608 |
| | | Total | 8208517 | 7825594 | 0 | 6133 | 7831727 | 7831727 |
| 2512 | Manufacture of tanks, reservoirs and containers of metal | Governmental | 11146612 | 11309863 | 2518126 | 595063 | 14423052 | 14423052 |
| | | Total | 11146612 | 11309863 | 2518126 | 595063 | 14423052 | 14423052 |

Value of sales and production by activity and sector for 2015

Con. Table (9)

(000ID)

| Activity | Manufacture | Sector | Total sales value | Complete production value | Incomplete production value | Revenues of service activity and operating for others | Total production at market price (producer price) | Production value of at cost price production) (factors |
|-----------------|--------------------------------------------------------------------------------------------------------------|----------------|--------------------------|----------------------------------|------------------------------------|--------------------------------------------------------------|----------------------------------------------------------|---------------------------------------------------------------|
| 2640 | Manufacture of consumer electronics | Iraqi+ foreign | 3369957 | 3199856 | 0 | 273732 | 3473588 | 3473588 |
| | | Total | 3369957 | 3199856 | 0 | 273732 | 3473588 | 3473588 |
| 2710 | ,Manufacture of electric motors generators, transformers, and electricity distribution and control apparatus | Governmental | 13864900 | 10649365 | 4779647- | 23825 | 5893543 | 5893543 |
| | | Public | 48679821 | 27494334 | 0 | 1231524 | 28725858 | 28725858 |
| | | Total | 62544721 | 38143699 | 4779647- | 1255349 | 34619401 | 34619401 |
| 2720 | Manufacture of batteries and accumulators | Governmental | 1162205 | 472021 | 0 | 99 | 472120 | 472120 |
| | | Total | 1162205 | 472021 | 0 | 99 | 472120 | 472120 |
| 2732 | Manufacture of other electronic and electric wires and cables | Governmental | 20736172 | 21543391 | 1846928- | 43757 | 19740220 | 19740220 |
| | | Total | 20736172 | 21543391 | 1846928- | 43757 | 19740220 | 19740220 |
| 2750 | Manufacture of domestic appliance | Private | 4942100 | 4942100 | 0 | 0 | 4942100 | 4942100 |
| | | Mixed | 1637861 | 283964 | 232517- | 1327609 | 1379056 | 1379056 |
| | | Total | 6579961 | 5226064 | 232517- | 1327609 | 6321156 | 6321156 |
| 2790 | Manufacture of other electrical equipment | Public | 534755 | 421892 | 568508 | 104456 | 1094856 | 1094856 |
| | | Total | 534755 | 421892 | 568508 | 104456 | 1094856 | 1094856 |

Value of sales and production by activity and sector for 2015

Con. Table (9)

| | | | | | | | | (000ID) |
|----------------------------|---------------------------------------------------------------------------------------------------------------|--------------|-------------------|---------------------------|-----------------------------|-------------------------------------------------------|---------------------------------------------------|--------------------------------------------------------|
| Activity | Manufacture | Sector | Total sales value | Complete production value | Incomplete production value | Revenues of service activity and operating for others | Total production at market price (producer price) | Production value of at cost price production (factors) |
| 2821 | Manufacture of agricultural and forestry machinery | Governmental | 5543048 | 4379683 | 250180 | 328621 | 4958484 | 4958484 |
| | | Total | 5543048 | 4379683 | 250180 | 328621 | 4958484 | 4958484 |
| 2824 | ,Manufacture of machinery for mining quarrying and construction | Public | 9845094 | 9845094 | 5150 | 0 | 9850244 | 9850244 |
| | | Total | 9845094 | 9845094 | 5150 | 0 | 9850244 | 9850244 |
| 2910 | Manufacture of motor -vehicles | Governmental | 64890205 | 57665079 | 508299 | 28929938 | 87103316 | 87103316 |
| | | Total | 64890205 | 57665079 | 508299 | 28929938 | 87103316 | 87103316 |
| 2920 | Manufacture of bodies (coachwork) for , motor vehicles, manufacture manufacture of trailers and semi-trailers | Private | 2945000 | 2945000 | 0 | 0 | 2945000 | 2945000 |
| | | Total | 2945000 | 2945000 | 0 | 0 | 2945000 | 2945000 |
| 3092 | Manufacture of bicycles and invalid carriages | Mixed | 501066 | 310337 | 121- | 14645 | 324861 | 324861 |
| | | Total | 501066 | 310337 | 121- | 14645 | 324861 | 324861 |
| 3100 | Manufacture of furniture | Public | 509792 | 470960 | 0 | 0 | 470960 | 470960 |
| | | Private | 368675 | 368675 | 0 | 0 | 368675 | 368675 |
| | | Total | 878467 | 839635 | 0 | 0 | 839635 | 839635 |
| Total manufacturing | | | 5226436320 | 5275403208 | 12590615 | 175267331 | 5463261154 | 5462831176 |
| Grand total | | | 5232509868 | 5281476756 | 12590615 | 175267331 | 5469334702 | 5468904724 |

Value of commodity and service production supplies by section and sector for 2015

Table (10)

(000ID)

| Section | Manufacture | Sector | Crude and raw materials | Packing and packaging materials | Other commodity supplies | Service supplies | Total supplies value |
|----------------------------|----------------------|-----------------------------------|--------------------------------|----------------------------------------|---------------------------------|-------------------------|-----------------------------|
| B | Mining and quarrying | Public | 209935 | 0 | 365226 | 219517 | 794678 |
| | | Total | 209935 | 0 | 365226 | 219517 | 794678 |
| | | Total mining and quarrying | 209935 | 0 | 365226 | 219517 | 794678 |
| C | Manufacturing | Governmental | 1350847675 | 13631058 | 290086134 | 44599371 | 1699164238 |
| | | Public | 64704426 | 1361012 | 27408679 | 51071756 | 144545873 |
| | | Private | 480731109 | 236141045 | 203760047 | 85078855 | 1005711056 |
| | | Mixed | 67889060 | 94526029 | 19329364 | 7174294 | 188918747 |
| | | (Iraqi+foreign)Mixed | 1107567 | 1983 | 1129986 | 706150 | 2945686 |
| | | Total | 1965279837 | 345661127 | 541714210 | 188630426 | 3041285600 |
| Total manufacturing | 1965279837 | 345661127 | 541714210 | 188630426 | 3041285600 | | |
| Grand total | | | 1965489772 | 345661127 | 542079436 | 188849943 | 3042080278 |

Value of commodity and service production supplies by division and sector for 2015

Table (11) to be continued

(000ID)

| Section | Manufacture | Sector | Crude and raw material used in production | Packing and packaging materials used in | Other commodity supplies used in | Service supplies | Total supplies value |
|---------|-----------------------------------|--------------|-------------------------------------------|-----------------------------------------|----------------------------------|------------------|----------------------|
| B | Mining and quarrying | | | | | | |
| 8 | Other mining and quarrying | Public | 209935 | 0 | 365226 | 219517 | 794678 |
| | Total mining and quarrying | | 209935 | 0 | 365226 | 219517 | 794678 |
| c | Manufacturing | | | | | | |
| 10 | Manufacture of food products | Governmental | 341726 | 1353829 | 12678123 | 1481908 | 15855586 |
| | | Public | 4074644 | 1077600 | 821147 | 195855 | 6169246 |
| | | Private | 312673229 | 28792789 | 32181525 | 17240442 | 390887985 |
| | | Mixed | 1737247 | 23115 | 19210 | 14347 | 1793919 |
| | | Total | 318826846 | 31247333 | 45700005 | 18932552 | 414706736 |
| 11 | Manufacture of beverages | Private | 42842715 | 193671584 | 18643319 | 13357035 | 268514653 |
| | | Mixed | 64396871 | 94476346 | 19036993 | 6593280 | 184503490 |
| | | Total | 107239586 | 288147930 | 37680312 | 19950315 | 453018143 |
| 12 | Manufacture of tobacco products | Governmental | 1346429 | 359767 | 383539 | 153287 | 2243022 |
| | | Total | 1346429 | 359767 | 383539 | 153287 | 2243022 |

Value of commodity and service production supplies by section and sector for 2015

Con. Table (11)

(000ID)

| Section | Manufacture | Sector | Crude and raw material used in production | Packing and packaging materials used in | Other commodity supplies used in | Service supplies | Total supplies value |
|----------------|----------------------------------------------------|---------------|--------------------------------------------------|------------------------------------------------|-----------------------------------------|-------------------------|-----------------------------|
| 13 | Manufacture of textiles | Governmental | 8408519 | 379667 | 1990073 | 1087267 | 11865526 |
| | | Total | 8408519 | 379667 | 1990073 | 1087267 | 11865526 |
| 15 | Manufacture of leather and related products | Governmental | 8184119 | 32355 | 251347 | 193613 | 8661434 |
| | | Total | 8184119 | 32355 | 251347 | 193613 | 8661434 |
| 18 | Printing and reproduction of recorded media | Governmental | 977815 | 17457 | 462124 | 573167 | 2030563 |
| | | Public | 10455062 | 254000 | 536377 | 578382 | 11823821 |
| | | Private | 485691 | 1263 | 68753 | 34214 | 589921 |
| | | Total | 11918568 | 272720 | 1067254 | 1185763 | 14444305 |
| 19 | Manufacture of coke and refined petroleum products | Governmental | 1211740154 | 98316 | 168914806 | 13916303 | 1394669579 |
| | | Public | 29998797 | 0 | 18123442 | 45026663 | 93148902 |
| | | Private | 41776741 | 0 | 5915272 | 12141817 | 59833830 |
| | | Total | 1283515692 | 98316 | 192953520 | 71084783 | 1547652311 |

Value of commodity and service production supplies by section and sector for 2015

Con. Table (11)

(000ID)

| Section | Manufacture | Sector | Crude and raw material used in production | Packing and packaging materials used in | Other commodity supplies used in | Service supplies | Total supplies value |
|----------------|------------------------------------------------------------------------------|---------------|--------------------------------------------------|------------------------------------------------|-----------------------------------------|-------------------------|-----------------------------|
| 20 | Manufacture of chemicals and chemical products | Governmental | 8525189 | 1627085 | 9701481 | 3495556 | 23349311 |
| | | Public | 4147925 | 27136 | 1508954 | 1303117 | 6987132 |
| | | Private | 8632323 | 8347317 | 424979 | 369331 | 17773950 |
| | | Total | 21305437 | 10001538 | 11635414 | 5168004 | 48110393 |
| 21 | Manufacture of basic pharmaceutical products and pharmaceutical preparations | Private | 59645 | 0 | 206050 | 47090 | 312785 |
| | | Mixed | 37800 | 26544 | 39455 | 53000 | 156799 |
| | | Total | 97445 | 26544 | 245505 | 100090 | 469584 |
| 22 | Manufacture of rubber and plastic products | Governmental | 93300 | 0 | 6000 | 2826 | 102126 |
| | | Public | 171051 | 0 | 250395 | 113582 | 535028 |
| | | Private | 5543105 | 146950 | 819790 | 404075 | 6913920 |
| | | Mixed | 126088 | 0 | 94332 | 120565 | 340985 |
| | | Total | 5933544 | 146950 | 1170517 | 641048 | 7892059 |
| 23 | Manufacture of other non-metallic mineral products | Governmental | 35044620 | 8851427 | 78455212 | 10273507 | 132624766 |
| | | Public | 615854 | 0 | 225221 | 124693 | 965768 |
| | | Private | 63605002 | 5042082 | 144863209 | 40695971 | 254206264 |
| | | Total | 99265476 | 13893509 | 223543642 | 51094171 | 387796798 |

Value of commodity and service production supplies by section and sector for 2015

| Con. Table (11) | | | | | | | (000ID) |
|------------------------|-------------------------------------------------------------------------|------------------|--------------------------------------------------|------------------------------------------------|-----------------------------------------|-------------------------|-----------------------------|
| Section | Manufacture | Sector | Crude and raw material used in production | Packing and packaging materials used in | Other commodity supplies used in | Service supplies | Total supplies value |
| 24 | Manufacture of basic metals | Governmental | 10174605 | 0 | 11144009 | 2911111 | 24229725 |
| | | Private | 559571 | 0 | 94770 | 114200 | 768541 |
| | | Total | 10734176 | 0 | 11238779 | 3025311 | 24998266 |
| 25 | Manufacture of fabricated metal products except machinery and equipment | Governmental | 4747231 | 0 | 1203550 | 1153556 | 7104337 |
| | | Public | 1175995 | 0 | 3203205 | 467772 | 4846972 |
| | | Private | 299606 | 0 | 135866 | 100015 | 535487 |
| | | Total | 6222832 | 0 | 4542621 | 1721343 | 12486796 |
| 26 | Manufacture of computer, electronic and optical products | (Iraqi+ foreign) | 1107567 | 1983 | 1129986 | 706150 | 2945686 |
| | | Total | 1107567 | 1983 | 1129986 | 706150 | 2945686 |
| 27 | Manufacture of electrical equipment | Governmental | 22680460 | 911155 | 1969184 | 2314402 | 27875201 |
| | | Public | 12381587 | 2276 | 2453310 | 2460583 | 17297756 |
| | | Private | 2600113 | 139060 | 377975 | 541190 | 3658338 |
| | | Mixed | 442844 | 24 | 94435 | 330630 | 867933 |
| | | Total | 38105004 | 1052515 | 4894904 | 5646805 | 49699228 |

Value of commodity and service production supplies by section and sector for 2015

| Con. Table (11) | | | | | | | | (000ID) |
|----------------------------|--------------------------------------------------------------|---------------|--------------------------------------------------|------------------------------------------------|-----------------------------------------|-------------------------|-----------------------------|----------------|
| Section | Manufacture | Sector | Crude and raw material used in production | Packing and packaging materials used in | Other commodity supplies used in | Service supplies | Total supplies value | |
| 28 | Manufacture of machinery and equipment n.e.c | Governmental | 892092 | 0 | 1064131 | 548503 | 2504726 | |
| | | Public | 1275850 | 0 | 254332 | 788328 | 2318510 | |
| | | Total | 2167942 | 0 | 1318463 | 1336831 | 4823236 | |
| 29 | Manufacture of motor vehicles and trailers and semi-trailers | Governmental | 37691416 | 0 | 1862555 | 6494365 | 46048336 | |
| | | Private | 1601765 | 0 | 15454 | 19150 | 1636369 | |
| | | Total | 39293181 | 0 | 1878009 | 6513515 | 47684705 | |
| 30 | Manufacture of other transport equipment | Mixed | 1148210 | 0 | 44939 | 62472 | 1255621 | |
| | | Total | 1148210 | 0 | 44939 | 62472 | 1255621 | |
| 31 | Manufacture of furniture | Public | 407661 | 0 | 32296 | 12781 | 452738 | |
| | | Private | 51603 | 0 | 13085 | 14325 | 79013 | |
| | | Total | 459264 | 0 | 45381 | 27106 | 531751 | |
| Total manufacturing | | | 1965279837 | 345661127 | 541714210 | 188630426 | 3041285600 | |
| Grand total | | | 1965489772 | 345661127 | 542079436 | 188849943 | 3042080278 | |

Value of commodity and service production supplies by manufacture and sector for 2015

Table (12) to be continued

(000ID)

| Activity | Manufacture | Sector | Crude and raw materials used in production | Packing and packaging materials used in production | Other commodity supplies used in production | Service supplies | Total supplies value |
|-----------------------------------|----------------------------------------------------------|---------|--------------------------------------------|----------------------------------------------------|---------------------------------------------|------------------|----------------------|
| 810 | Mining and quarrying Quarrying of stone,sand and clay | Public | 209935 | 0 | 227779 | 100182 | 537896 |
| | | Total | 209935 | 0 | 227779 | 100182 | 537896 |
| | | | | | | | |
| 893 | Extraction of salt | Public | 0 | 0 | 137447 | 119335 | 256782 |
| | | Total | 0 | 0 | 137447 | 119335 | 256782 |
| Total mining and quarrying | | | 209935 | 0 | 365226 | 219517 | 794678 |
| 1010 | Manufacturing Processing and preserving of meat | Private | 4438284 | 781664 | 203010 | 154035 | 5576993 |
| | | Total | 4438284 | 781664 | 203010 | 154035 | 5576993 |
| | | | | | | | |
| 1030 | Processing and preserving of fruit and vegetables | Private | 2587963 | 2037535 | 791421 | 306735 | 5723654 |
| | | Mixed | 1737247 | 23115 | 19210 | 14347 | 1793919 |
| | | Total | 4325210 | 2060650 | 810631 | 321082 | 7517573 |

Value of commodity and service production supplies by manufacture and sector for 2015

| Con. Table (12) | | | | | | | (000ID) |
|-----------------|---------------------------------------------------------|------------|---------------------------------|-----------------------------------------|---------------------------------------------|------------------|----------------------|
| Activity | Manufacture | Sector | Crude and raw materials used in | Packing and packaging materials used in | Other commodity supplies used in production | Service supplies | Total supplies value |
| 1050 | Manufacture of dairy products | Government | 257849 | 0 | 151781 | 39084 | 448714 |
| | | Public | 4074644 | 1077600 | 821147 | 195855 | 6169246 |
| | | Private | 5176723 | 2963442 | 926848 | 421965 | 9488978 |
| | | Total | 9509216 | 4041042 | 1899776 | 656904 | 16106938 |
| 1061 | Manufacture of grain mill products | Government | 83877 | 1353829 | 12526342 | 1442824 | 15406872 |
| | | Private | 67990 | 11105898 | 20385881 | 15183553 | 46743322 |
| | | Total | 151867 | 12459727 | 32912223 | 16626377 | 62150194 |
| 1071 | Manufacture of bakery products | Private | 3221170 | 856630 | 712541 | 183360 | 4973701 |
| | | Total | 3221170 | 856630 | 712541 | 183360 | 4973701 |
| 1072 | Manufacture of sugar | Private | 288420000 | 9900000 | 7600000 | 485000 | 306405000 |
| | | Total | 288420000 | 9900000 | 7600000 | 485000 | 306405000 |
| 1073 | Manufacture of cocoa, chocolate and sugar confectionary | Private | 2577039 | 1006496 | 1091357 | 347539 | 5022431 |
| | | Total | 2577039 | 1006496 | 1091357 | 347539 | 5022431 |
| 1079 | Manufacture of other food products | Private | 999050 | 125924 | 396967 | 53255 | 1575196 |
| | | Total | 999050 | 125924 | 396967 | 53255 | 1575196 |

Value of commodity and service production supplies by manufacture and sector for 2015

| Con. Table (12) | | | | | | | (000ID) |
|------------------------|---------------------------------------------------------------------------------|---------------|----------------------------------------|------------------------------------------------|----------------------------------------------------|-------------------------|-----------------------------|
| Activity | Manufacture | Sector | Crude and raw materials used in | Packing and packaging materials used in | Other commodity supplies used in production | Service supplies | Total supplies value |
| 1080 | Manufacture of prepared animal feeds | Private | 5185010 | 15200 | 73500 | 105000 | 5378710 |
| | | Total | 5185010 | 15200 | 73500 | 105000 | 5378710 |
| 1101 | Distilling , rectifying and blending of spirits | Private | 492825 | 312125 | 89144 | 11209 | 905303 |
| | | Total | 492825 | 312125 | 89144 | 11209 | 905303 |
| 1104 | Manufacture of soft drinks , production mineral waters and other bottled waters | Private | 42349890 | 193359459 | 18554175 | 13345826 | 267609350 |
| | | Mixed | 64396871 | 94476346 | 19036993 | 6593280 | 184503490 |
| | | Total | 106746761 | 287835805 | 37591168 | 19939106 | 452112840 |
| 1200 | Manufacture of tobacco products | Government | 1346429 | 359767 | 383539 | 153287 | 2243022 |
| | | Total | 1346429 | 359767 | 383539 | 153287 | 2243022 |
| 1311 | Spinning , weaving and finishing of textile | Government | 6554557 | 345961 | 1468843 | 927678 | 9297039 |
| | | Total | 6554557 | 345961 | 1468843 | 927678 | 9297039 |
| 1392 | Manufacture of made-up textile articles except apparel | Government | 1844739 | 33706 | 210867 | 101291 | 2190603 |
| | | Total | 1844739 | 33706 | 210867 | 101291 | 2190603 |
| 1393 | Manufacture of carpets and rugs | Government | 9223 | 0 | 310363 | 58298 | 377884 |
| | | Total | 9223 | 0 | 310363 | 58298 | 377884 |
| 1520 | Manufacture of footwear | Government | 8184119 | 32355 | 251347 | 193613 | 8661434 |
| | | Total | 8184119 | 32355 | 251347 | 193613 | 8661434 |

Value of commodity and service production supplies by manufacture and sector for 2015

| Con. Table (12) | | | | | | | (000ID) |
|------------------------|---------------------------------------------------------------|---------------|----------------------------------------|------------------------------------------------|----------------------------------------------------|-------------------------|-----------------------------|
| Activity | Manufacture | Sector | Crude and raw materials used in | Packing and packaging materials used in | Other commodity supplies used in production | Service supplies | Total supplies value |
| 1811 | Printing | Government | 977815 | 17457 | 462124 | 573167 | 2030563 |
| | | Public | 10455062 | 254000 | 536377 | 578382 | 11823821 |
| | | Private | 485691 | 1263 | 68753 | 34214 | 589921 |
| | | Total | 11918568 | 272720 | 1067254 | 1185763 | 14444305 |
| 1910 | Manufacture of coke and refined petroleum products | Government | 6689647 | 0 | 926032 | 188015 | 7803694 |
| | | Public | 739698 | 0 | 278112 | 52632 | 1070442 |
| | | Private | 151260 | 0 | 25368 | 10330 | 186958 |
| | | Total | 7580605 | 0 | 1229512 | 250977 | 9061094 |
| 1920 | Manufacture of refined petroleum products | Government | 1205050507 | 98316 | 167988774 | 13728288 | 193865885 |
| | | Public | 29259099 | 0 | 17845330 | 44974031 | 92078460 |
| | | Private | 41625481 | 0 | 5889904 | 12131487 | 59646872 |
| | | Total | 1275935087 | 98316 | 191724008 | 70833806 | 1538591217 |
| 2011 | Manufacture of basic chemicals | Government | 1788908 | 108733 | 1578125 | 402957 | 3878723 |
| | | Public | 4147925 | 27136 | 1508954 | 1303117 | 6987132 |
| | | Total | 5936833 | 135869 | 3087079 | 1706074 | 10865855 |
| 2012 | Manufacture of fertilizers and nitrogen co | Government | 4599230 | 72315 | 6450253 | 2117572 | 13239370 |
| | | Total | 4599230 | 72315 | 6450253 | 2117572 | 13239370 |
| 2013 | Manufacture of plastics and synthetic rubber in primary forms | Private | 144595 | 0 | 82660 | 22310 | 249565 |
| | | Total | 144595 | 0 | 82660 | 22310 | 249565 |

Value of commodity and service production supplies by manufacture and sector for 2015

| Con. Table (12) | | | | | | | (000ID) |
|------------------------|-----------------------------------------------------------------------------------------------------------|---------------|----------------------------------------|------------------------------------------------|----------------------------------------------------|-------------------------|-----------------------------|
| Activity | Manufacture | Sector | Crude and raw materials used in | Packing and packaging materials used in | Other commodity supplies used in production | Service supplies | Total supplies value |
| 2022 | Manufacture of paints, varnishes and similar coatings, printing inks and mastics | Private | 7838340 | 353390 | 288334 | 321200 | 8801264 |
| | | Total | 7838340 | 353390 | 288334 | 321200 | 8801264 |
| 2023 | Manufacture of soap and detergents, cleaning and polishing preparations, perfumes and toilet preparations | Government | 2137051 | 1446037 | 1673103 | 975027 | 6231218 |
| | | Private | 644757 | 7993414 | 53510 | 25465 | 8717146 |
| | | Total | 2781808 | 9439451 | 1726613 | 1000492 | 14948364 |
| 2029 | Manufacture of other chemical products n.e.c | Private | 4631 | 513 | 475 | 356 | 5975 |
| | | Total | 4631 | 513 | 475 | 356 | 5975 |
| 2100 | Manufacture of basic pharmaceuticals, medical chemical and botanical products | Private | 59645 | 0 | 206050 | 47090 | 312785 |
| | | Mixed | 37800 | 26544 | 39455 | 53000 | 156799 |
| | | Total | 97445 | 26544 | 245505 | 100090 | 469584 |
| 2220 | Manufacture of plastic products | Government | 93300 | 0 | 6000 | 2826 | 102126 |
| | | Public | 171051 | 0 | 250395 | 113582 | 535028 |
| | | Private | 5543105 | 146950 | 819790 | 404075 | 6913920 |
| | | Mixed | 126088 | 0 | 94332 | 120565 | 340985 |
| | | Total | 5933544 | 146950 | 1170517 | 641048 | 7892059 |
| 2391 | Manufacture of refractory products | Private | 93389 | 0 | 36928 | 15610 | 145927 |
| | | Total | 93389 | 0 | 36928 | 15610 | 145927 |

Value of commodity and service production supplies by manufacture and sector for 2015

| Con. Table (12) | | | | | | | | (000ID) |
|-----------------|------------------------------------------------------------|--------------|---------------------------------|-----------------------------------------|---------------------------------------------|------------------|----------------------|---------|
| Activity | Manufacture | Sector | Crude and raw materials used in | Packing and packaging materials used in | Other commodity supplies used in production | Service supplies | Total supplies value | |
| 2392 | Manufacture of clay building materials | Government | 136500 | 0 | 733200 | 505900 | 1375600 | |
| | | Private | 37431974 | 125600 | 132792448 | 37607544 | 207957566 | |
| | | Total | 37568474 | 125600 | 133525648 | 38113444 | 209333166 | |
| 2394 | Manufacture of cement, lime and plaster | Government | 33134714 | 8850838 | 76646690 | 8899138 | 127531380 | |
| | | Private | 12023302 | 4916482 | 9770263 | 1283755 | 27993802 | |
| | | Total | 45158016 | 13767320 | 86416953 | 10182893 | 155525182 | |
| 2395 | ,Manufacture of articles of concrete cement and plaster | Government | 1773406 | 589 | 1075322 | 868469 | 3717786 | |
| | | Public | 615854 | 0 | 225221 | 124693 | 965768 | |
| | | Private | 14056337 | 0 | 2263570 | 1789062 | 18108969 | |
| | | Total | 16445597 | 589 | 3564113 | 2782224 | 22792523 | |
| 2410 | Manufacture of basic iron and steel | Government | 10174605 | 0 | 11144009 | 2911111 | 24229725 | |
| | | Private | 330000 | | 36850 | 50000 | 416850 | |
| | | Total | 10504605 | 0 | 11180859 | 2961111 | 24646575 | |
| 2420 | Manufacture of basic precious and other non-ferrous metals | Private | 229571 | 0 | 57920 | 64200 | 351691 | |
| | | Total | 229571 | 0 | 57920 | 64200 | 351691 | |

Value of commodity and service production supplies by manufacture and sector for 2015

| Con. Table (12) | | | | | | | | (000ID) |
|-----------------|--------------------------------------------------------------------------------------------------------------|---------------|---------------------------------|-----------------------------------------|---------------------------------------------|--------------------------|----------------------|---------|
| Activity | Manufacture | Sector | Crude and raw materials used in | Packing and packaging materials used in | Other commodity supplies used in production | Service supplies used in | Total supplies value | |
| 2511 | Manufacture of structural metal products | Public | 1175995 | 0 | 3203205 | 467772 | 4846972 | |
| | | Private | 299606 | 0 | 135866 | 100015 | 535487 | |
| | | Total | 1475601 | 0 | 3339071 | 567787 | 5382459 | |
| 2512 | Manufacture of tanks, reservoirs and containers of metal | Governmer | 4747231 | 0 | 1203550 | 1153556 | 7104337 | |
| | | Total | 4747231 | 0 | 1203550 | 1153556 | 7104337 | |
| 2640 | Manufacture of consumer electronics | (Iraqi+foreic | 1107567 | 1983 | 1129986 | 706150 | 2945686 | |
| | | Total | 1107567 | 1983 | 1129986 | 706150 | 2945686 | |
| 2710 | ,Manufacture of electric motors generators, transformers, and electricity distribution and control apparatus | Governmer | 8315149 | 17109 | 226472 | 1861680 | 10420410 | |
| | | Public | 10657783 | 2276 | 2161591 | 1243138 | 14064788 | |
| | | Total | 18972932 | 19385 | 2388063 | 3104818 | 24485198 | |
| 2720 | Manufacture of batteries and accumulators | Governmer | 189738 | 19164 | 914348 | 64181 | 1187431 | |
| | | Total | 189738 | 19164 | 914348 | 64181 | 1187431 | |
| 2732 | Manufacture of other electronic and electric wires and cables | Governmer | 14175573 | 874882 | 828364 | 388541 | 16267360 | |
| | | Total | 14175573 | 874882 | 828364 | 388541 | 16267360 | |
| 2750 | Manufacture of domestic appliance | Private | 2600113 | 139060 | 377975 | 541190 | 3658338 | |
| | | Mixed | 442844 | 24 | 94435 | 330630 | 867933 | |
| | | Total | 3042957 | 139084 | 472410 | 871820 | 4526271 | |

Value of commodity and service production supplies by manufacture and sector for 2015

| Con. Table (12) | | | | | | | (000ID) |
|----------------------------|---------------------------------------------------------------------------------------------------------------|------------|---------------------------------|-----------------------------------------|---------------------------------------------|------------------|----------------------|
| Activity | Manufacture | Sector | Crude and raw materials used in | Packing and packaging materials used in | Other commodity supplies used in production | Service supplies | Total supplies value |
| 2790 | Manufacture of other electrical equipment | Public | 1723804 | 0 | 291719 | 1217445 | 3232968 |
| | | Total | 1723804 | 0 | 291719 | 1217445 | 3232968 |
| 2821 | Manufacture of agricultural and forestry machinery | Government | 892092 | 0 | 1064131 | 548503 | 2504726 |
| | | Total | 892092 | 0 | 1064131 | 548503 | 2504726 |
| 2824 | Manufacture of machinery for mining quarrying and construction | Public | 1275850 | 0 | 254332 | 788328 | 2318510 |
| | | Total | 1275850 | 0 | 254332 | 788328 | 2318510 |
| 2910 | Manufacture of motor -vehicles | Government | 37691416 | 0 | 1862555 | 6494365 | 46048336 |
| | | Total | 37691416 | 0 | 1862555 | 6494365 | 46048336 |
| 2920 | Manufacture of bodies (coachwork) for , motor vehicles, manufacture manufacture of trailers and semi-trailers | Private | 1601765 | 0 | 15454 | 19150 | 1636369 |
| | | Total | 1601765 | 0 | 15454 | 19150 | 1636369 |
| 3092 | Manufacture of bicycles and invalid carriages | Mixed | 1148210 | 0 | 44939 | 62472 | 1255621 |
| | | Total | 1148210 | 0 | 44939 | 62472 | 1255621 |
| 3100 | Manufacture of furniture | Public | 407661 | 0 | 32296 | 12781 | 452738 |
| | | Private | 51603 | 0 | 13085 | 14325 | 79013 |
| | | Total | 459264 | 0 | 45381 | 27106 | 531751 |
| Total manufacturing | | | 1965279837 | 345661127 | 541714210 | 188630426 | 3041285600 |
| Grand total | | | 1965489772 | 345661127 | 542079436 | 188849943 | 3042080278 |

Number of slaughterhouses, employees and wages by governorate for 2015

Table (13)

| Governorate | Number of slaughterhouses | | | Number of employees | | | Wage (000ID) | | |
|-----------------|---------------------------|------------|-----------|---------------------|------------|------------|----------------|---------------|----------------|
| | Governmental | Contracted | Total | Governmental | Contracted | Total | Governmental | Contracted | Total |
| Kirkuk | 0 | 1 | 1 | 8 | 9 | 17 | 60960 | 30600 | 91560 |
| Diala | 0 | 2 | 2 | 0 | 3 | 3 | 0 | 9000 | 9000 |
| Baghdad | 0 | 1 | 1 | 5 | 14 | 19 | 48000 | 61200 | 109200 |
| Babylon | 5 | 3 | 8 | 33 | 8 | 41 | 391624 | 41800 | 433424 |
| Kerbela | 1 | 0 | 1 | 27 | 0 | 27 | 240846 | 0 | 240846 |
| Wasit | 0 | 3 | 3 | 13 | 4 | 17 | 22820 | 11000 | 33820 |
| Najaf | 2 | 1 | 3 | 15 | 12 | 27 | 46400 | 0 | 46400 |
| Qadisiya | 4 | 0 | 4 | 20 | 4 | 24 | 84887 | 14000 | 98887 |
| Muthanna | 1 | 2 | 3 | 6 | 6 | 12 | 28680 | 45720 | 74400 |
| Thi-Qar | 0 | 4 | 4 | 7 | 15 | 22 | 78600 | 40200 | 118800 |
| Missan | 1 | 0 | 1 | 6 | 9 | 15 | 57000 | 54000 | 111000 |
| Basrah | 2 | 0 | 2 | 35 | 0 | 35 | 243600 | 0 | 243600 |
| Total | 16 | 17 | 33 | 175 | 84 | 259 | 1303417 | 307520 | 1610937 |

Type of revenues and amounts of contract and value and amount of electricity by governorate for 2015

Table (14)

| Governorate | Contractor revenues (000ID) | Municipality revenues (000ID) | Contract amount (000ID) | Electricity value and other expenditures | Amount of electricity consumed K.W/H |
|--------------------|------------------------------------|--------------------------------------|--------------------------------|-------------------------------------------------|---------------------------------------------|
| Kirkuk | 257400 | 0 | 13500 | 31300 | 450 |
| Diala | 21753 | 0 | 1650 | 1510 | 3900 |
| Baghdad | 88350 | 0 | 88350 | 6050 | 3050 |
| Basbylon | 144143 | 7315 | 3200 | 2046 | 19874 |
| Kerbela | 0 | 126532 | 0 | 0 | 0 |
| Wasit | 88350 | 0 | 7300 | 4216 | 15783 |
| Najaf | 269000 | 13750 | 77000 | 60960 | 52728 |
| Qadisiya | 0 | 113312 | 0 | 50384 | 9520 |
| Muthanna | 83726 | 6720 | 6000 | 9800 | 322320 |
| Thi-Qar | 90675 | 0 | 38000 | 3680 | 9045 |
| Missan | 409375 | 0 | 0 | 13500 | 36000 |
| Basrah | 0 | 217220 | 0 | 15850 | 2600 |
| Total | 1452772 | 484849 | 235000 | 199296 | 475270 |

Number of slaughtered animals in slaughterhouses and quantity of meat produced by governorate for 2015

Table (15)

(Kg)

| Governorate | Sheep | | Goat | | Cow | | Buffalo | | Camel | |
|-----------------|---------------|----------------|--------------|----------------|---------------|-----------------|--------------|----------------|-------------|----------------|
| | Number | Quantity | Number | Quantity | Number | Quantity | Number | Quantity | Number | Quantity |
| Kirkuk | 79014 | 1580280 | 100 | 1400 | 21927 | 4385400 | 250 | 57500 | 20 | 3800 |
| Diala | 10573 | 161392 | 2440 | 32432 | 1961 | 272930 | 0 | 0 | 0 | 0 |
| Baghdad | 3000 | 60000 | 2400 | 43200 | 2400 | 552000 | 720 | 194400 | 10 | 3000 |
| Babylon | 27348 | 490884 | 12026 | 168364 | 26806 | 3950665 | 1364 | 260175 | 25 | 5020 |
| Kerbela | 100875 | 2017500 | 60500 | 907500 | 20293 | 3348345 | 2529 | 505800 | 100 | 22500 |
| Wasit | 11137 | 217472 | 2737 | 38318 | 6503 | 992500 | 0 | 0 | 0 | 0 |
| Najaf | 6362 | 101792 | 744 | 10416 | 7058 | 882250 | 552 | 82800 | 19 | 5700 |
| Qadisiya | 12475 | 144700 | 982 | 16259 | 11390 | 1846000 | 962 | 239000 | 2692 | 708100 |
| Muthanna | 7073 | 147380 | 12991 | 257659 | 7009 | 1036350 | 764 | 151700 | 986 | 254800 |
| Thi-Qar | 7983 | 154218 | 2404 | 30150 | 8950 | 1305050 | 2115 | 425320 | 206 | 55960 |
| Missan | 16450 | 329000 | 400 | 5200 | 9285 | 1021350 | 300 | 51000 | 50 | 9500 |
| Basrah | 4100 | 75380 | 1112 | 18923 | 2360 | 805050 | 1280 | 607600 | 0 | 0 |
| Total | 286390 | 5479998 | 98836 | 1529821 | 125942 | 20397890 | 10836 | 2575295 | 4108 | 1068380 |